

SPRING 2014

UNIVERSITY MAGAZINE

TEMPLE

BREAKING DOWN THE WALL

The Inside-Out program
holds class in prison,
challenging assumptions
about incarceration.



Ian Watson

TEMPLE

From the human body to a school in South Africa, Owls explore new frontiers constantly. In this issue: Students learn valuable lessons inside a state prison; researchers study how everyday life affects our DNA; graphic-design graduates forge their own paths; and journalism students document life in Africa.

2 Then & Now 3 From the President 4 Campus Voice 5 News 12 Alumni News 41 Class Notes 52 The Last Word



18

STUDENTS

EDUCATION FROM THE INSIDE OUT

A worldwide program housed at Temple gives students real-world insight into social justice.



24

ALUMNI

CREATIVE CLASS

Tyler alumni find that having a graphic-design degree no longer means having to work in an advertising agency.



30

RESEARCH

GAME CHANGERS

Professor of Medicine Jean-Pierre Issa studies how our lifestyles inform our genetics.

34

COMMUNITY

THROUGH A WIDER LENS

A photo essay depicts the transformations of photojournalism students studying in South Africa.

14 TEACHING, LEARNING, LEADING: President Neil D. Theobald's first year at Temple was a banner one.

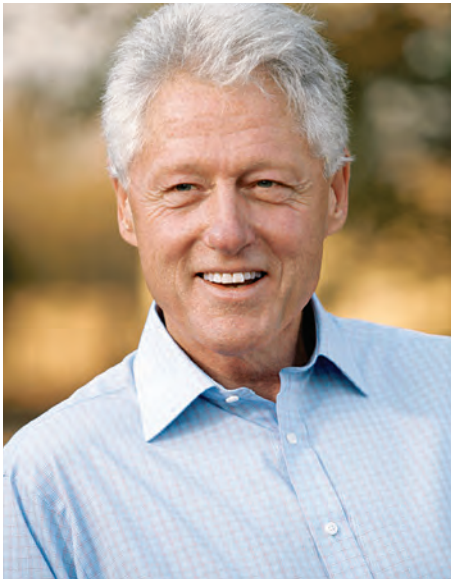
TEMPLE'S PRESIDENTIAL APPEAL



Former U.S. President Bill Clinton will visit the Liacouras Center April 10 to address an audience of more than 8,000 people. Clinton was invited to speak by the Temple Law Foundation, a group founded in 1959 to promote excellence in the Beasley School of Law. Former Pennsylvania Gov. Ed Rendell will moderate a question-and-answer session after Clinton's remarks.

Four sitting U.S. presidents have visited Temple: Franklin D. Roosevelt in 1936, Harry S. Truman in 1948, Lyndon B. Johnson in 1964 and Jimmy Carter in 1980. Four leaders visited campus before their presidencies, including Dwight D. Eisenhower in 1950 and Richard Nixon in 1955. In 1960, U.S. Sen. John F. Kennedy addressed students while campaigning for president, and in 2008, President Barack Obama also made a campaign stop at Temple. Clinton is the first leader to visit post-presidency.

> To learn more about President Clinton's lecture, visit www.law.temple.edu/lawfoundation-lecture or call 800-298-4200.



Top left: As a U.S. senator, John F. Kennedy addresses a crowd of students on Temple's Main Campus during a campaign stop in 1960.

Above: Former President Richard Nixon receives an honorary degree from Temple in 1955.

Left: Former President Bill Clinton will address a crowd of more than 8,000 people in the Liacouras Center in April.

VOL. 67 NO. 4 / SPRING 2014

Vice President for Strategic Marketing and Communications
Karen Clarke

Associate Vice President, Strategic Marketing and Communications
Raymond Betzner

Senior Editor
Maria Raha

Associate Editor
Renee Cree, SMC '12

Art Director
Jacqueline Spadaro

Designers
Trish Brown, Lynda Cloud-Weber, Robert Frawley, Stacey Lee
Temple University Creative Services (536-1213)

Correspondence, Address Changes and Gifts
Bell Building, 3rd floor, 1101 W. Montgomery Ave.,
Philadelphia, PA 19122


Email
templemag@temple.edu

Website
temple.edu/templemag

Temple is published by Temple University of the Commonwealth System of Higher Education.

© Copyright 2014 by Temple University

Temple University is committed to a policy of equal opportunity for all in every aspect of its operations. The university has pledged not to discriminate on the basis of race, color, sex, age, religion, national origin, sexual orientation, marital status or disability. This policy extends to all educational, service and employment programs of the university.

 Sustainably designed and printed to reflect Temple University's commitment to environmental stewardship.



KEY TO SCHOOL AND COLLEGE CODES

BYR	Boyer College of Music and Dance
CHPSW	College of Health Professions and Social Work
CLA	College of Liberal Arts
CST	College of Science and Technology
DEN	Kornberg School of Dentistry
EDU	College of Education
ENG	College of Engineering
FOX	Fox School of Business
HON	Honorary Degree
LAW	Beasley School of Law
MED	School of Medicine
PHR	School of Pharmacy
POD	School of Podiatric Medicine
SED	School of Environmental Design
SMC	School of Media and Communication
SSW	School of Social Work
TFM	Division of Theater, Film and Media Arts
THM	School of Tourism and Hospitality Management
TYL	Tyler School of Art

As I talk with students about the biggest issues they face, one subject comes up repeatedly: the amount of debt they will have to assume to pay for their education. Though we have worked to keep a Temple education affordable—our tuition increases averaged less than 1.5 percent in the past two years—it is clear we needed to take additional action.

That is why we created Fly in 4, a partnership between incoming freshmen and the university. The goal is simple. We will provide classes when students need them, a strong level of advising and a regular update on student progress. In return, students agree to meet with their advisors regularly, take classes when they are offered and pass all the courses they take.

If students uphold their end of the bargain, Temple will throw in an added benefit. For students who do everything they are supposed to but still cannot graduate on time due to the unavailability of a required class, Temple will provide the remaining course work at no charge.

In addition, we know many students have to work to pay for college. However, we also know that students who work more than 15 hours per week off campus are likely to fall behind and earn lower grades. To help those with the highest need, Temple will provide \$4,000 annual grants to 500 students in each incoming class. Those grants will allow students to focus less on working for pay and more on finishing their degrees.



All incoming freshmen will have the opportunity to sign up for Fly in 4, and we believe it will be a tremendous success. You can learn more at temple.edu/flyin4.

Fly in 4 is one more way Temple is taking a stand and making college more affordable.

Neil D. Theobald
President, Temple University

Follow Temple!

 facebook.com/templeu

 [@TempleUniv](https://www.instagram.com/TempleUniv)

 twitter.com/TempleUniv

 [Temple University Alumni Group](https://www.linkedin.com/groups/Temple-University-Alumni-Group)

We'd like to hear from you!

To share your opinions with the *Temple* staff, email templemag@temple.edu or send a letter to *Temple Magazine*, Bell Building, 3rd floor, 1101 W. Montgomery Ave., Philadelphia, PA 19122.

HOME MADE

When it comes to housing, most college students worry about who their dorm mates might be or whether or not their landlords will allow pets. Rick Getts, Class of 2015, worried about things such as building a new foundation and repairing a destroyed roof.

For two years, Getts spent his holidays, nights, weekends and even his free time between classes rebuilding a house in the Fishtown section of Philadelphia. He purchased it with his father and his uncle and finished construction in 2013. His handiwork includes features such as concrete countertops and a multiple-spray shower.

The only parts of the original property that remain are the first floor and some exterior brickwork—Getts, his father and his uncle rebuilt the rest.



Joseph V. Labolito

RICK GETTS

DEGREE: BS, civil engineering, College of Engineering, Class of 2015

HOMETOWN: Huntingdon Valley, Pa.

What made you decide to take on such a large project?

My father and my uncle own rental properties, and they discussed purchasing and rebuilding a house and having me rent it from them. When I was working on a construction project in Fishtown with my dad, we saw a house for sale that was really destroyed. Since we liked the area, my dad, my uncle and I bought it together.

Had you built anything on this scale before?

When I was in fourth grade, a car ran into the side of our house. That led my father (who owns a construction company) to change the layout of the house to include an addition

that I helped build. We also rebuilt my uncle's house, so I've been around construction my whole life.

How does that background help with your civil engineering major?

Civil engineering includes things like roadway design, building bridges and structural issues—how long a beam should be and how much force and weight it can take. Having a background in construction helped me understand those concepts firsthand.

What was the most challenging part of construction?

Rebuilding the foundation in the kitchen. We had to pour

concrete, but there was nowhere to park a truck. So we had to come in the front door and go through the entire house with wheelbarrows of concrete.

What is your favorite part of the house?

I like my kitchen. We were toying with the idea of putting in an island, and it wound up being an L-shaped bar with concrete countertops. And the fireplace is back there, so it's nice to sit by the fire and relax after class.

Do you have any advice for those interested in building their own home?

It's a lot easier to try things out when you're in the middle of home improvement rather than finish and say, "I want to change this," or "I want to fix that." Whatever you're thinking of doing, go for it.

NEWS

Spring brings renewed activity across Temple's campuses. In this issue: Researchers find that lack of sleep in children could lead to obesity; Tyler students display their art in a Center City hotel; a graduate student takes Philadelphia's history directly to its people; and a renowned faculty member retires after three decades.

Ryan S. Brandenberg



BUILDING TEMPLE'S FUTURE

In November, Murray H. Shusterman, FOX '33, LAW '36, pledged a gift of \$1.1 million to the Beasley School of Law, which will fund the Shusterman Professorship in Transactional Business and Law and give the rapidly expanding business-law curriculum a substantial boost.

Since graduating from the School of Law at Temple in 1936, Shusterman has practiced and taught in the field of business and real-estate law. His gift is the most recent in a list of contributions that spans more than seven decades. "It is not an exaggeration to say that without Murray Shusterman, Temple Law could not have achieved its current level

of excellence," says School of Law Dean JoAnne Epps. "His commitment and generosity have been an inspiration to all of us."

After receiving an undergraduate degree from Temple in 1933, Shusterman became a member of the Law School's first day-division class, where he edited the *Temple Law Quarterly* and graduated with honors. He

co-founded the Temple University Law Foundation in 1959, the Law School's first major fundraising organization. Its initial endowment of \$50,000 has grown to nearly \$3 million. He also served on the faculty of the Law School, as counsel for the Temple University Alumni Association, and as a

member of both the Law School Board of Visitors and the Temple Board of Trustees.

Shusterman's previous gift, a \$1 million gift toward the renovation of Park Hall, was one of the largest gifts made to the Law School at that time. The restored building opened in 1997 as Murray H. Shusterman Hall.

"Whatever progress I've made personally and professionally, I owe a large extent to the excellent education I received at Temple," Shusterman says. **ASHWIN VERGHESE, SMC '08**

> To learn more about supporting Temple, visit giving.temple.edu.

MICROBRAIN

Temple engineers and neuroscientists—in collaboration with CFD Research Corp. in Huntsville, Ala.—are developing a pediatric blood-brain barrier system on a chip (pictured below), which offers great potential for studying the role of the blood-brain barrier in pediatric neurological diseases and testing its permeability for various therapeutic drugs.

The blood-brain barrier allows or prevents substances—including certain therapeutic drugs—from entering the brain. In children, the barrier is more permeable than it is in adults, making the child's brain more vulnerable to neurotoxic substances.

To better understand that vulnerability, Mohammad Kiani, chair of mechanical engineering in the College of Engineering, and Barbara Krynska, assistant professor of neurology in the Shriners Hospitals Pediatric

Research Center in the School of Medicine, map brain vascular networks that are reproduced on chips similar to microscope slides. Each of those chips contains a group of cells that resembles veins—through which fluids travel—and another group that resembles brain tissue.

Previously, Kiani had developed the technology to map the vascular networks of various animal organs. Prabhakar Pandian—a former graduate student of Kiani's who now works for CFD Research Corp.—approached him with the idea of reproducing detailed maps on chips or slides.

“Essentially we created a micro-vascular network on a chip,” says Kiani, who, with Pandian, received funding from the National Institutes of Health to develop the original chips.

Kiani looked into possible uses for chips that contained vascular systems and even tumors, and says that they were inexpensive, easier to reproduce and “provided higher throughput” than animal models did.

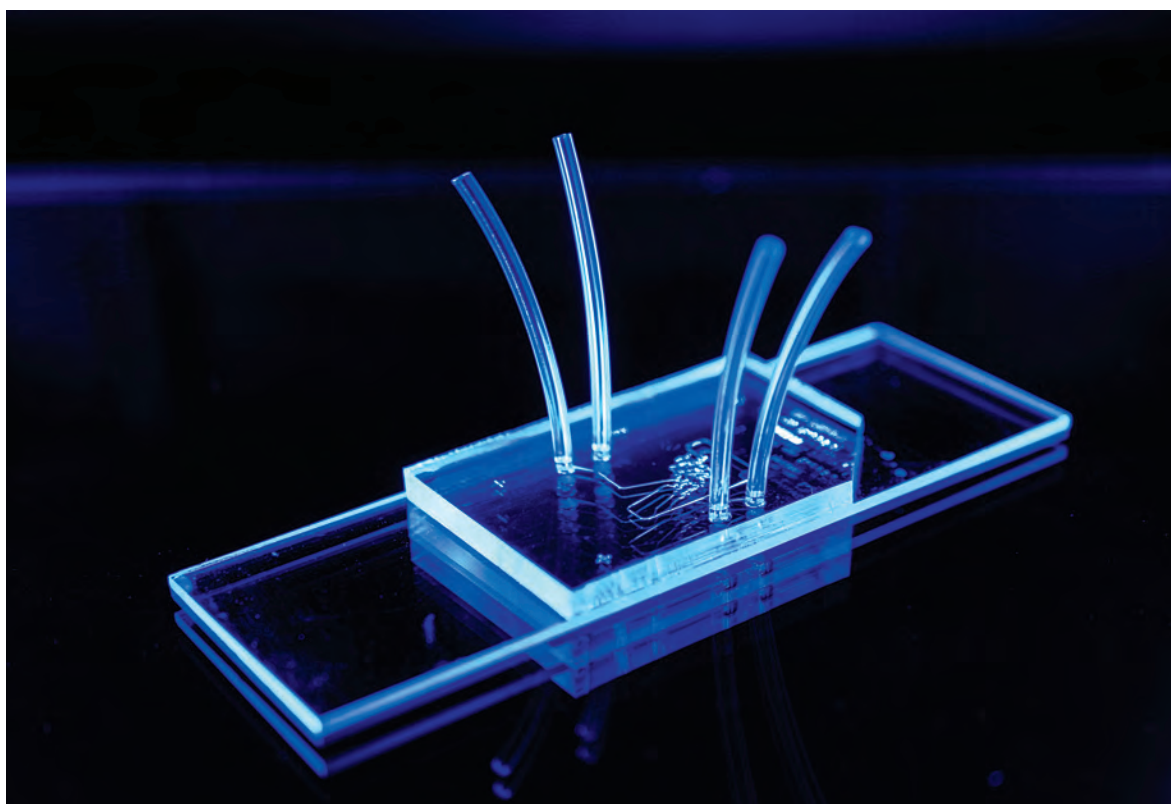
“Using these systems on chips can give us an overview of the important disease processes or permeability of therapeutics before we ever begin the more expensive animal and human studies,” he says.

He adds that researchers also might be able to use thousands of the same chips inexpensively and run the same experiment or vary it using those chips until they figure out what is taking place.

“With those chips, we can watch everything take place in the brain vascular network in real time under a microscope,” Kiani says, adding that what researchers are seeing is nearly identical to what occurs in real-life subjects. **PRESTON M. MORETZ, SMC '82**

DID YOU KNOW?

SynVivo, a synthetic, vascular environment that uses the chip technology co-developed by Mohammad Kiani, was selected as one of the “Top 10 Innovations for 2013” by *The Scientist* magazine in the fall.



Mohammad Kiani



SLEEP RIGHT

Though factors such as an abundance of high-calorie foods and drinks and large portion sizes have been associated with the rise in childhood obesity, new research by the Center for Obesity Research and Education (CORE) at Temple suggests that later bed-times also might play a role.

Published in *Pediatrics*, the study is the first of its kind to examine the impact of sleep on children's eating behaviors by manipulating the amount of sleep study participants received.

Thirty-seven children between 8 and 11 years old—27 percent of whom were overweight or obese—participated in the three-week study. During the first week, the children slept their typical amount. The group was randomized in the second week to either reduce or lengthen sleep times and completed the opposite sleep schedule during the third and final week.

With increased sleep, children consumed an average of 134 fewer calories per day, weighed a half-pound less and had lower fasting levels of leptin, a hunger-regulating hormone that also correlates with a body's amount of adipose (fat) tissue, when compared to the week of decreased sleep.

“Findings from this study suggest that enhancing school-age children's sleep could have important implications for the prevention and treatment of obesity,” says Chantelle Hart, associate professor of public health at CORE. “The potential role of sleep should be explored further.” **SUSAN VOGEL**



FAST FACTS

According to the National Sleep Foundation:

Toddlers and children require between 11 and 14 hours of sleep each night.

In addition to obesity, lack of sleep in children has been linked to mood swings and behavioral problems such as ADHD and can affect their ability to learn in school.

National Sleep Foundation 2013. “Children and Sleep.” sleepfoundation.org/article/sleep-topics/children-and-sleep

Joseph V. Labolito



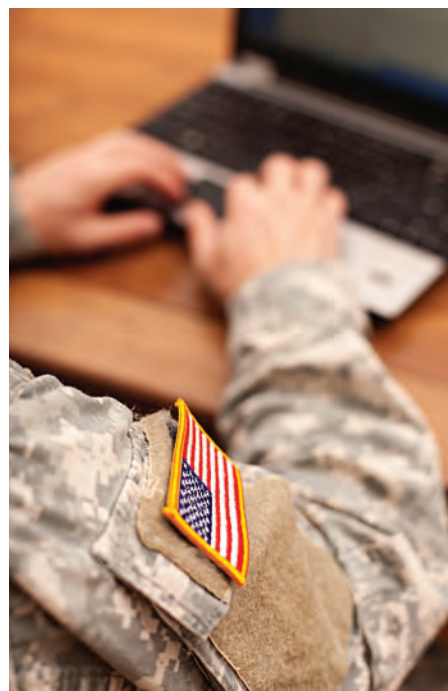
Luis Biava (above), professor of music and artistic director of the Temple University Symphony Orchestra, will retire this spring after more than 30 years at Temple.

MUSIC MAN

After 32 years at Temple, Luis Biava will retire from his position as professor of music and artistic director and conductor of the Temple University Symphony Orchestra at the end of this academic year. Under his direction, the orchestra performed *fourth stream ... La Banda* and *Overture, Waltz and Rondo* by Bill Cunliffe; and *Ansel Adams: America* by Chris and Dave Brubeck. Those performances were nominated for Grammy awards in the “Best Instrumental Composition” category.

Biava was born into a musical family. His mother and father performed in Teatro dell'Opera di Roma; his father later played musical scores for silent movies. Biava began playing violin at 11 years old and spent several years performing with the National Symphony Orchestra in Washington, D.C., and the Philadelphia Orchestra before being named the latter company's conductor-in-residence in 1994, a position he held for 10 years.

In addition to serving as director and conductor of the 110-member Temple University Symphony Orchestra, Biava also directed and conducted the Temple University Youth Chamber Orchestra and served as senior artistic administrator and conductor of the Pacific Music Festival in Sapporo, Japan. **JAZMYN BURTON**



VETERAN FRIENDLY

Temple was one of only 52 national universities included in *U.S. News & World Report's* inaugural list of “Best Colleges for Veterans.” That list comprises “top-ranked schools [that] offer benefits to veterans and active service members that can help them pursue a college education.”

To qualify for inclusion, institutions had to be ranked among *U.S. News' "Best Colleges"*; members of the Servicemembers Opportunity Colleges Consortium; certified for the GI Bill; and participants in the Yellow Ribbon Program, a federal initiative that helps fund college tuition and fees for post-9/11 veterans. Each university on the “Best Colleges for Veterans” list was ranked according to its *U.S. News* “Best Colleges” ranking (2014 edition), with Temple tied for No. 24.

The university's placement caps a three-year period of expansion of its veterans programs, resulting in a tripling of veteran enrollment at Temple. **HILLEL J. HOFFMANN**

> To learn more about veteran support at Temple, visit temple.edu/veterans.

HEALTHY START

Women working in Head Start—the nation's largest federally funded, early-childhood education program that serves nearly 1 million low-income children—report higher-than-expected levels of physical and mental health problems, according to Temple researchers.

In a paper published in *Preventing Chronic Disease*, a team led by Robert Whitaker, professor of public health and pediatrics, studied responses to an anonymous, online survey of more than 2,100 female Head Start workers and found numerous surprising outcomes. Six chronic health conditions, including obesity, asthma and diabetes, were between 19 and 35 percent more common among female Head Start staff than in the comparable U.S. population; 24 percent of staff suffered from significant depressive symptoms; 28 percent reported that their physical or mental health was “not good” on half or more days in a 30-day period; 15 percent rated their overall health as either “fair or poor”; and 9 percent missed 10 or more days of work due to illness.

“No study has ever examined the health of [Head Start] staff, the group on which the program relies to achieve its goals,” Whitaker says. “The staff must be well to do well by the children and their families.”

The researchers noted several potential approaches to address the health of the staff, such as placing a higher priority on staff wellness and improving the quality of food served to both staff members and the children under their care.

“Those working in Head Start have been entrusted with the development and education of some of the nation's most vulnerable and disadvantaged children,” Whitaker says. “The adults providing these services deserve a compassionate response to their health problems, which may be due in part to the stressful nature of their important jobs. Addressing the health of the staff might improve outcomes for children in Head Start.” **PRESTON M. MORETZ, SMC '82**

FAST FACTS

According to the Department of Health and Human Services:

Head Start serves a larger percentage of children with disabilities (**12 percent**) than the amount in the overall population of preschool-age children (**3-6 percent**).

Approximately **47,000 families** served in 2013 experienced homelessness. Of those, **34 percent** found housing during enrollment.

More than **1.2 million** adults volunteered in their local Head Start programs. Of those, **818,000** were parents of Head Start children.

U.S. Department of Health and Human Services, Administration for Children and Families. 2013. “Head Start Program Facts, Fiscal Year 2013.” eclkc.ohs.acf.hhs.gov/hslc/mr/factsheets/2013-hs-program-factsheet.html

PERFECT HARMONY



Yannick Nézet-Séguin, music director of the Philadelphia Orchestra, wears a cherry-and-white jersey during the first performance of the orchestra's free neighborhood concert series in the Temple Performing Arts Center in November.

David Fonda

INDEPENDENT ART

Last fall, the Tyler School of Art partnered with the Independent Hotel in Philadelphia on a rotating art exhibit that showcased 14 pieces of original artwork by Tyler students. Ten paintings and four drawings were displayed in the hotel's main lobby through February and were available for purchase.

Margo Margolis, graduate chair of the Department of Painting, Drawing and

Sculpture in Tyler, says the exhibit was a great opportunity to showcase Temple's talent to the surrounding community. “Temple has one of the top-ranked MFA programs in the country,” she notes. “Our students go out into the world and are some of the most visible and influential artists working on a national and international scale today.” In 2012, *U.S. News and World Report* ranked

Tyler No. 10 in the nation's top painting and drawing programs.

Seneca Weintraut, Class of 2016, had five pieces featured in the exhibit. “When you're an artist, exposure is a huge benefit,” she says. “I'm happy that a group of people that normally wouldn't have seen the work are seeing it.” **TAUHEEDAH SHUKRIYAH ASAD**

All photography by Joseph V. Labolito



Seneca Weintraut, Class of 2016, painted “A Line Drawn Before” (left) and “Night Swimmers” (right). Bottom left: The lobby of the Independent Hotel featured several works by Tyler students. Bottom right: Jonathan Ryan, Class of 2015, drew “Lake.”



SIMON SAYS

For babies, imitation is the foremost tool for learning. For example, watching others is how they know to hold a toy phone to their ear or guide a spoon to their mouth. Now, researchers at Temple and Washington universities have found the first evidence of a key aspect of brain processing that allows babies to learn through observation.

Published in *PLOS ONE*, the findings are the first to illustrate that babies' brains show specific activation patterns when they observe an adult performing a task with a specific part of the body.

The 70 infants in the study—conducted in the Developmental Science Lab at Temple—wore electroencephalogram caps with embedded sensors. Those sensors detected brain activity in the regions of the cortex that respond when hands and feet are used to touch an object. Sitting quietly on a parent's lap, each baby watched as a toy was placed on a table between the baby and a researcher.

When the infants watched researchers use their hands to touch a toy, the hand area of their cortexes lit up. When another group watched researchers touch a toy with their feet, the foot area showed more activity.

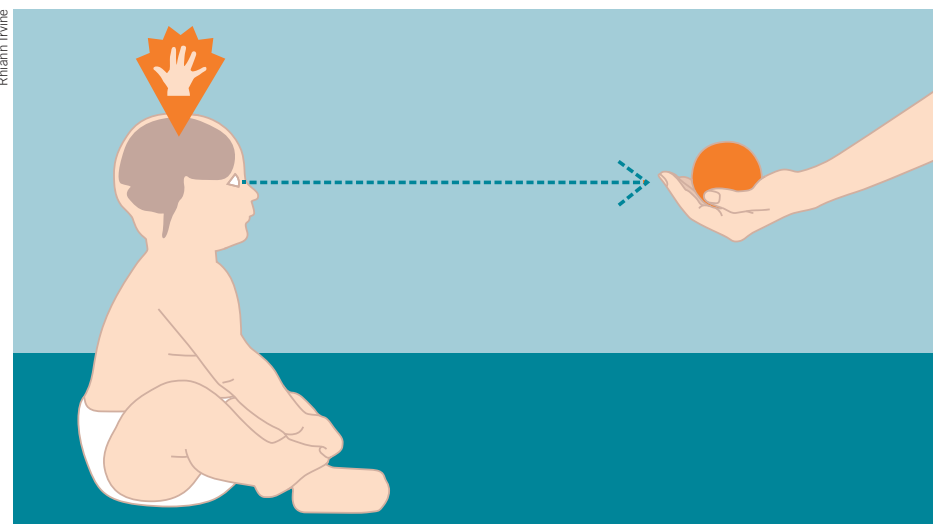
"The reason this is exciting is that it gives insight into a crucial aspect of imitation," says co-author Peter Marshall, associate professor of psychology at Temple. "To imitate the action of another person, babies first need to register what body part the other person used. Our findings suggest that babies do this by mapping the actions of the other person onto their own bodies."

The study took advantage of how the brain is organized. The sensory and motor area of the cortex—the creased, outer portion of the brain—is arranged by body part, with each area of the body represented in identifiable neural real estate. Prick your finger, stick out your tongue or kick a ball, and distinct areas of the brain light up according to a "somatotopic map."

"This mapping might facilitate imitation and could play a role in the baby's ability to produce the same actions themselves," says lead author Joni Saby, a graduate student in the Department of Psychology.

"In psychology, one of the big questions is how to relate behavior to processes in our brains," Marshall adds. "With this study, we have opened a window to how our brains help us learn and relate to one another."

KIM FISCHER, CLA '94



As a baby watches an adult touch an object with a foot or a hand, the area of the baby's brain that corresponds to those extremities shows increased activity. That activity indicates key brain processes essential to how babies learn.



Temple University Libraries

A GREAT LOSS

Edna Shanis Tuttleman, FOX '42, honorary lifetime trustee on Temple's Board of Trustees, passed away in December. She was 92 years old.

Tuttleman came to Temple as a student in the 1930s and became the first female class president in 1939. After receiving her bachelor's degree in 1942 from the School of Commerce—now the Fox School of Business—she worked in the accounting department at RCA in Camden, N.J. She then enlisted in WAVES (Women Accepted for Volunteer Emergency Service), a newly formed branch of the Navy, received officer training at Smith College in Massachusetts, and was assigned to encode and decode secret communications at a naval base in Boston.

After the war, she enrolled in the Pennsylvania Academy of the Fine Arts on the GI Bill. Tuttleman then spent two decades running the design operations of Corner House, an apparel manufacturing and retail firm launched by her husband, Stan. Eventually, the company was sold to The Limited.

She and her husband are among the university's most generous benefactors. Gifts from the Tuttleman Family Foundation have transformed Temple, making possible the construction of Main Campus' academic epicenter—the Tuttleman Learning Center—and the creation of Tuttleman Counseling Services. The family's generosity can be seen throughout Philadelphia, with the Tuttleman name gracing buildings and facilities citywide. **PRESIDENT NEIL D. THEOBALD**

HISTORY ON WHEELS

What was once an old mail truck is now a repository for the oral histories of residents of the East Kensington neighborhood of Philadelphia. Erin Bernard, SMC '08, a graduate student of history, created the mobile museum not only to showcase Philadelphia's past, but also to record neighborhood lore directly from those who live there.

Bernard's inspiration for the project stemmed from her position as the publicity, engagement and outreach associate at the Painted Bride Art Center in Old City, which encouraged her to think about residents' access to museums in Philadelphia. The city's ubiquitous food trucks also sparked her imagination.

As the history truck canvassed the area, Bernard held several community events, such as a Storytelling Block Party—a cookout designed to evoke stories from residents. Ultimately, Bernard hopes the truck will create connections between people and communities.

"People love to tell stories, and they care about where they live," she says.

SARAE GDOVIN, CLASS OF 2014



Laura S. Kiecy



Milton Hershey School

SPRINGBOARD TO SUCCESS

In January, President Barack Obama hosted a summit of more than 100 college and university presidents to discuss ways that access to higher education could be improved for more low-income students.

Thanks to a new partnership between Temple University Harrisburg and the Milton Hershey School (MHS), children from low-income families can get a jump start on their college careers. Called the College and Career Transition Program, it will offer a full semester of college classes to seniors at MHS. The initiative is led by Pete Gurt, FOX '89 (above), senior vice president and chief operating officer of that school.

"About 75 percent of our kids [at MHS] are at or below the poverty level," Gurt explains. "These are kids for whom college might have been out of sight without this kind of support."

Through the partnership, eligible seniors will finish their high school courses in the fall semester. In the spring, they will begin a full, 15-credit course load, with classes taught by Temple faculty at the MHS campus. Those classes are designed to fulfill a college or a university's general education requirements.

Link Martin, director of Temple University Harrisburg, says that the initiative gives students from MHS a significant advantage. "These students get the same level of classes they would on Main Campus or in Harrisburg, not a watered-down version," he says. "It's a springboard to college, and our hope is that that boost will help them graduate on time."

He adds that Temple University Harrisburg plans to conduct research on the participants' success in college, with the ultimate goal of implementing similar programs in other local school districts.

"This program will help continue [Temple Founder] Russell Conwell's legacy of keeping education accessible to all," Gurt says.

RENEE CREE, SMC '12

FAST FACTS

According to the National Center for Education Statistics (NCES):

The rate of high school graduates from low-income families who go directly to college after graduation is **52 percent.**

That rate for high school graduates from high-income families is 30 points higher—**82 percent.**

According to a 2011 study by the NCES, **69 percent** of white students were more likely to attend college immediately after high school,

followed by **65 percent** of African-American students

and **63 percent** of Latino students.

U.S. Department of Education, National Center for Education Statistics. 2013. nces.ed.gov/fastfacts/display.asp?id=51

ALUMNI NEWS

Now is your chance to become a part of the growing alumni network. New chapters are forming in the U.S. and around the world. And get ready to join the festivities at Alumni Weekend 2014!

ALUMNI WEEKEND: APRIL 25–27, 2014!

What is your Temple? Make plans to continue your Temple story this spring by joining fellow Owls at Alumni Weekend 2014.

> To learn more and to register, visit alumni.temple.edu/alumniweekend.



Joseph V. Labolito



Reconnect with Owls at reunions for the classes of 2004 and 1964, the Temple Student Government and the Golden Owls (classes of 1964 and earlier!)



Join us **Saturday, April 26**, for the 5K Run and Family Fun Walk, a scavenger hunt and festival at the Bell Tower, and the Cherry & White Spring Football Game!



Dan Z. Johnson

2



Laurence Keaterson

3



Betsy Manning, SMC '87, GLA '08

4

1. Fans at last year's Cherry & White Spring Football Game watch their Owls soar. 2. Attendees wrap up Alumni Weekend 2013 with the annual 5K Run and Family Fun Walk around Main Campus. 3. The Class of 1963 reconnects during its 50th reunion. 4. Owls of all ages join in the fun at last year's outdoor fair on Liacouras Walk.

REGIONAL CHAPTERS

Promote and celebrate Temple from your own backyard and around the world. New Temple University Alumni Association (TUAA) chapters are forming in Hartford, Conn.; Lancaster, Pa.; Pittsburgh; Hong Kong; Beijing; Shanghai; Tokyo; and Seoul. No matter where you are, become a part of the TUAA global alumni network today.

> To learn more about joining or starting a club near you, visit alumni.temple.edu/chapters.



Lisa M. Wilk, SMC '11, EDU '12



Temple University Alumni Association

1. Greater Philadelphia Chapter members enjoy a weekend at the Jersey Shore in July 2013. 2. Temple alumni, students and friends participate in the first Global Day of Service, held Nov. 9, 2013.

TRAVEL THE WORLD WITH TEMPLE



Margarete M. Marvin



With Temple Travels, you can turn your vacation into a mini-study-abroad program! Join fellow Owls and Temple faculty on trips to destinations including Machu Picchu, Morocco (above), Normandy, Sicily and others.

> To learn more about Temple Travels or to join the mailing list, visit alumni.temple.edu/templetravels.

COMING TO A CITY NEAR YOU

4/2: DISCOVER THE LEADER IN YOU! (online)

4/4–4/5: TEMPLE UNIVERSITY CHORAL REUNION (Philadelphia)

4/11: DENTAL REUNION 2014 (Philadelphia)

4/13: TEMPLE FAMILY DAY AT THE FLATBREAD COMPANY (Boston)

4/25–27: ALUMNI WEEKEND (Philadelphia)

CLASS OF 2004 10TH REUNION AND
CLASS OF 1964 50TH REUNION
(Philadelphia)

GOLDEN OWLS REUNION (Philadelphia)

TEMPLE STUDENT GOVERNMENT REUNION
(Philadelphia)

TEMPLE LAW REUNION (Philadelphia)

5/4: BROAD STREET RUN (Philadelphia)

5/5: TEMPLE UNIVERSITY JAZZ BAND
PERFORMANCE (New York City)

5/7: TWITTER YOUR WAY TO A NEW JOB
(online)

5/9: METS VS. PHILLIES (Flushing, N.Y.)

5/13: TUAA CHAPTER INFORMATION SESSION
(Pittsburgh)

> For a complete list of events, visit
alumni.temple.edu/events.

GET INVOLVED!

There are many ways for alumni to come together in their neighborhoods and around shared interests, professional networks and more. Be a part of Temple's worldwide network by volunteering with the TUAA. Get in on the ground floor and put your leadership skills to use!

To learn more about TUAA volunteer and leadership opportunities, email alumni@temple.edu or call 215-204-7521.



facebook.com/TempleAlumni

@TempleAlumni

Temple University Alumni Group

@TempleAlumni



President Neil D. Theobald addresses students during his class on organizational change, in which students are asked to identify problems at Temple and develop strategies to solve them.

TEACHING, LEARNING, LEADING

Temple President Neil D. Theobald takes the first year of his tenure by storm.

STORY BY ASHWIN VERGHESE, *SMC '08*

PHOTOGRAPHY BY JOSEPH V. LABOLITO

After more than 30 years in education, President Neil D. Theobald finds himself back where he began, standing in front of a classroom of students. But the onetime high school teacher is now leading a freshman seminar in organizational change. And he is serving up the lessons he has acquired during his first year as Temple's 10th president.

Since arriving at Temple in January 2013, Theobald has spearheaded dynamic changes across the 130-year-old university, from overhauling Temple's budget process; to hiring 54 new faculty members, a new provost, five new deans and three new vice presidents; to developing a clear vision that will define Temple's future.

Those changes have led to record-breaking admissions, fundraising and research milestones over the past year. There also are many initiatives on the horizon, including bold strategies to reduce student debt and a new campus master plan.

The wait-and-see approach? Not for this first-time president. With year one of his tenure in the books, Theobald has a robust

body of achievements to look back on, and much he hopes to achieve in 2014 and beyond.

"I am privileged to be the president of Temple University, a role I am enjoying tremendously," he says. "As good as Temple is, though, we have to get better—we must strive to improve continually."

MILESTONES

The results of Theobald's first year speak for themselves. At the beginning of the 2013-2014 academic year, Temple welcomed its most ever academically qualified class of new freshmen and transfer students. Its average SAT score (1129) was 20 points higher than last year's average and nearly 140 points higher than the most recent Pennsylvania average. In addition, more than 500 freshmen joined the Temple Honors Program.

In keeping with Temple's history, the new class also grew in diversity. The number of African-American undergraduates increased by 7 percent, while the number of new



Clockwise, from above: Theobald addresses a congregation at Mount Zion Baptist Church in Philadelphia during the annual Martin Luther King Day of Service in January. By speaking one on one with students, staff, faculty and alumni, Theobald hopes to gain a better understanding of the needs of the university. Freshmen enrolled in Theobald's class will have the opportunity to assume leadership positions during their remaining three years at Temple. Theobald congratulates the 2013 Homecoming Queen, Joie Johnson-Walker, Class of 2014, during the Homecoming festivities in October.



Latino undergraduates increased by 18 percent. There also was a nearly 4 percent rise in students from Philadelphia.

"Our success in recruiting excellent students is not only of importance to the university," Theobald says. "We also provide southeast Pennsylvania with its most valuable resource: human capital. One in seven college graduates in the five-county region is a Temple graduate.

"Our potential to be an even greater asset to the city, the region and the commonwealth is simply immense as we continue to improve the diversity, accessibility and quality of our undergraduate student body," he adds.

Temple also helps the community through its research, ranging from developing innovative cancer treatments to helping the Philadelphia Police Department patrol effectively. In the past fiscal year, Temple experienced an impressive rise in external research funding to \$224 million. There also was a nearly fivefold increase in revenue generated from the licensing of Temple-developed technologies.

Additionally, Theobald's first year saw a new fundraising record of \$65.8 million. That record total was driven by an unprecedented

88 percent rise in new gifts and pledges to student scholarships.

"The past year has seen Temple reach one milestone after another," says Board of Trustees Chair Patrick J. O'Connor. "Much of that has been due to President Theobald's leadership. He made it clear that Temple must do more for our students and our community, and the university has risen to his challenge."

As his second year gets under way, Theobald has many more changes planned for Temple. A campus master plan incorporating input from students, faculty, staff and alumni is on the slate for 2014. One component of the plan—a new library in the heart of Main Campus—is scheduled to be completed in 2018.

In January, Theobald unveiled Fly in 4, a partnership between students and the university that will provide incoming freshmen with the tools and incentives they need to graduate on time. That initiative will launch in the fall.

"Taking longer than four years to graduate can add tens of thousands of dollars in debt. It also delays a student's entry into the higher-paying, college-educated segment of the workforce," Theobald says. "Fly in 4

gives students who commit to graduating on time the ability to reduce their debt and advance more quickly into careers that will allow them to pay off the debt they do acquire. Our students must not keep their futures waiting."

LOOKING AHEAD

Not all the changes Theobald has overseen have been easy. In December, the university announced it will reduce its number of varsity sports from 24 to 19 at the end of this academic year. That reduction will put Temple in line with the number of teams supported by other universities in the American Athletic Conference. The athletics cuts also were a part of a national trend of universities reducing their sports programs in a period of financial strain in higher education.

"It was an extremely difficult decision," Theobald says, noting that student-athletes on the affected teams will retain their scholarships, and the university will help them transfer if they choose to do so.

He knows there are more challenges ahead, from securing state funding to supporting Temple University Hospital, which

provides \$62 million in healthcare to the indigent in Philadelphia—the largest city or county in the U.S. without a public hospital.

VISION THROUGH ENGAGEMENT

One way Theobald is likely to address those challenges is by getting out and talking to alumni, students and faculty. He has held large town-hall meetings in New York and Philadelphia, and small dinners in other cities, to gain insight from Temple's graduates. On campus, he has flipped burgers on his Weber grill at staff and student barbecues, and he has informal lunches with professors regularly.

With his wife, Sheona Mackenzie, Theobald also teaches a yearlong seminar on organizational change, where freshman students are asked to identify problems at Temple and develop ways to fix them.

The class also is an opportunity to assemble a group of students who will be prepared to assume leadership positions during their remaining three years, the president says. His students know it is a unique opportunity.

"He's great. He's very engaging," Caroline Housel, one of his students, says. "He always asks us about things going on around campus

"He always asks us about things going on around campus and tells us how helpful it is to have students' opinions when he's making decisions for the university."

—CAROLINE HOUSEL, CLASS OF 2017

and tells us how helpful it is to have students' opinions when he's making decisions for the university."

Housel and her classmates were among the members of the Temple community who were invited when Theobald was inaugurated formally as Temple's president in October. Speaking before a packed house in the historic Baptist Temple—once the church of Temple Founder Russell Conwell—Theobald laid out his vision for what the university can accomplish in the years ahead. That vision included six commitments for Temple's future: keeping education accessible and affordable, contributing Temple's expertise to the city and the commonwealth, conducting life-changing research and more. (Also see: *Temple*, winter 2014, "A New Day," p. 17.)

"As we address the six commitments, the result will inevitably be that Temple will take its rightful place as one of the very best public research universities of the 21st century," Theobald says. "More importantly, success in these six crucial areas will help Philadelphia—and Pennsylvania—emerge as a major force in the 21st-century global economy." ■

CAPITAL IDEAS

When President Neil D. Theobald traveled to Harrisburg, Pa., in February to make Temple's annual appeal for state support, he was met with praise from state-elected officials for Fly in 4 and Temple's 20/20 Scholarships. The latter program helps residents from neighborhoods surrounding the university pay for a Temple education.

State Sen. Patricia Vance remarked that she was "impressed by the Fly in 4 initiative."

Rep. Cherelle Parker commended Theobald for his efforts to keep Temple accessible and affordable. "What [Temple] is doing with Fly in 4 will help to ensure that people will have access to a quality higher education, whether or not they were born into a wealthy family," Parker said.

Theobald told senators the goal of Fly in 4 is to help students graduate on time by providing classes when needed and relieving the burden of working excessive hours at outside jobs, thus reducing their college debts.

State Sen. Jake Corman, chair of the Senate Appropriations Committee, highlighted the growing commitment Temple has made to the city of Philadelphia through programs such as the 20/20 Scholarships. "Thirty years ago, Temple was a commuter school,"

Corman said. "Today, [it] has become a residential school that is fully engaged with the community."



EDUCATION FROM THE INSIDE OUT

A PROGRAM BORN AT TEMPLE AND HELD IN CORRECTIONAL
FACILITIES SHIFTS PERCEPTIONS OF CRIME AND PUNISHMENT.

PHOTOGRAPHY BY RYAN S. BRANDENBERG

The Inside-Out Prison Exchange Program in the Department of Criminal Justice began at Temple in 1997 and is now an international teaching model. Each fall, once per week, Criminal Justice Instructor Lori Pompa (bottom left) brings together Temple students and their “inside” counterparts at the Pennsylvania State Correctional Institution at Graterford. The students discuss crime, social justice, recidivism and more.



I don't wear my watch, because I like to think that time stops during our 2 ½ hours together.

—YADI, PSYCHOLOGY MAJOR, CLASS OF 2014

The students file through a metal detector. They submit IDs, sign a ledger, have their hands stamped and receive plastic bracelets. Past a handful of prison guards in the security area, they stroll down a long hallway. Other corridors housing prison cells flank its sides. Those incarcerated linger in the corridor and glance occasionally at the students, but these visitors are regulars. Each Tuesday night at the Pennsylvania State Correctional Institution at Graterford, students arrive for class.

Temple students have been taking classes in such facilities for more than 16 years, ever since Department of Criminal Justice Instructor Lori Pompa took her class to visit the State Correctional Institution at Dallas, Pa., in 1995. Following a panel discussion there, she met Paul, a man serving a life sentence. Inspired by the discussion, Paul envisioned an environment where the incarcerated could share ideas with students on a weekly basis. Within two years, Pompa had launched the Inside-Out Prison Exchange Program as a class in the Department of Criminal Justice at Temple. She has been holding classes at Graterford since 2002. (Paul was transferred to Graterford by that time and remains involved in the program.)

Since those beginnings, Inside-Out has become an international educational model, with 480 teachers from more than 200 colleges and universities in 38 states, three Canadian provinces, Australia, Denmark and the U.K. trained as program instructors. Pompa estimates that approximately 18,000 students have taken the class.

Through Inside-Out's flagship program at Temple, between 15 and 18 “inside” students—the imprisoned—and the same number of “outside” students—the undergraduates—meet once a week behind Graterford's imposing walls. They only know each other's first names. Outside students do not know the nature of their inside counterparts' convictions. They sit in a circle in alternating seats: one inside student, one outside student and so on. Facilitated by Pompa, the classmates discuss crime, social justice, recidivism (repeated incarceration) and more.

Inside-Out not only underscores the realities of criminal-justice issues for outside students; it gives inside students opportunities for academic rigor. Additionally, it

explodes stereotypes surrounding prisoners and college students alike, challenges concepts of race and class privilege, and personalizes experiences both penal and academic.

Over the course of a month during the fall semester, three students in the Class of 2014 wrote for *Temple* about their experiences at Graterford.

WEEK 1

Matthew: The first day of Inside-Out is much like the first day of school. It's not unusual to be anxious, wondering how the teacher is going to be, how the workload for the class will pan out and who your fellow classmates will be. The one obvious difference is that in Inside-Out, half the class is incarcerated. At first, thinking that I would be spending one night per week in a prison was a little intimidating.

Getting through security was an ordeal in itself, but once we were in, there was no turning back. Walking down the long hallway to the back of the prison, past the cell-blocks, I observed the incarcerated men and the guards, and I realized we were entering their home.

Turning the corner into the classroom quelled my anxiety. I saw about 15 men sitting at their desks, smiling. Everyone wanted to talk with us, meet us—and they wanted us to get to know them, as well. Though the Graterford uniform is an obvious reminder of who they are in that setting, it no longer felt as if we were in a prison.

Eric: During the introductory exercise, I felt a combination of timidity, mild anxiety and fear. The outside students sat in an inner circle facing a rotating outer circle of inside students, and we were asked various questions to get to know one another.

I was cautious in what I said to my first partner in the exercise; I did not want to offend him or say anything demeaning. I was not afraid of the man sitting across from me—I was more concerned with how I would come off to him. However, I realized quickly how ridiculous my hesitation was, and my self-created awkwardness disappeared. The excitement and spirit of the inside students made the introductions more comfortable and easygoing than I would have expected.

Yadi: There is no clock in our classroom. I don't wear my watch, because I like to think that time stops during our 2 ½ hours together. We have to be told multiple times to bring our discussions to an end, because we always have more to discuss.



WEEK 2

Matthew: I've gotten comfortable with my classmates fairly quickly—there is too much honesty being thrown around for anything less. The way the class is conducted promotes dialogue: We sit in a big circle and our instructor facilitates discussions. We often break into small groups, but generally we come back to the large circle at the end and reflect on the subject. Whether the topic is the correctional system, law enforcement, punishment or rehabilitation, many opinions are shared.

It gets to the point where we kind of forget that it's a class. Yes, there are assigned readings and papers, but the subjects of our discussions actually matter. I don't mean to downplay other academic subjects, I only mean that there is value in discussing issues that are real and affect the lives of others. When we create a space in which everyone can be honest with each other, it's hard not to look at things differently.

Yadi: We spent most of the class in silence. We were asked to think about how we feel when we witness someone being harmed, when we harm someone and when we are harmed. Themes such as hurt, unworthiness



WEEK 3

and regret kept coming up—not only as descriptions of how we felt when we were harmed, but also of when we harmed or witnessed someone else causing harm. Both “victim” and “perpetrator” felt the same kinds of things. People who commit crimes are still human and subject to human feelings.

Lori also asked us what we lose both as those who are hurt and those who cause hurt. Then, themes such as self-worth, innocence and dignity surfaced.

In the grand scheme of things, we are all victims. Because of that, it is important that we all receive help after being harmed. And, it is equally important that the person who committed the crime receive help, so that he or she will not want to commit another crime. To act as though only one part of the equation is affected is an injustice. We are all hurt by hurt.

Yadi: Inside-Out has taught me a lot in a very short period of time. If one in 100 people is incarcerated, it affects a great deal of us, either directly or through the imprisonment of loved ones. Since that is the case, I want people to understand the realities of incarceration and its minimal effect on crime prevention.

Statistically speaking, 95 percent of people in prison will re-enter society. One of the biggest problems we’ve addressed has been that successful re-entry is damn near impossible. Often, government assistance is unavailable to ex-cons, which leaves them unable to find help with food and shelter. An inside student named Ron did some research and discovered some places that help the formerly imprisoned with food and clothes, but many incarcerated people are unaware of them. If they have help, they are less likely to resort to crime as a means of support. The recidivism rate is such that two in three ex-cons will reoffend and return to jail. It is easy to say those numbers speak to their own failures, but I’d say they speak to society’s failure to help them become productive citizens.

WEEK 4

Matthew: We’ve covered a lot of material in the time we’ve spent together in class. We’ve discussed the institution of prison, and crime and the myths and realities that come with it. We’ve analyzed the criminal-justice system from almost every angle. We’ve compared and contrasted punishment and rehabilitation. We’ve connected victimization and restorative justice. Currently, we’re exploring issues associated with re-entry into society. I think that last conversation is what really matters. The ultimate goal of incarcerated individuals is to get out and stay out if their sentences don’t hold them for life. But even then, many of the so-called “lifers” take strides to improve their situations through productive activities.

I think the toughest part about imprisonment is holding on to your identity. People often find it easy to strip away one’s identity and replace it with the label of “criminal.” Meeting my classmates and having meaningful interactions with them has shown me the resilience that exists within us all.

Everyone has slipups, even horrible ones, but does that give anyone the right to remind us constantly of our faults? I’m sure each of us would wind up behind bars if laws against jaywalking, underage drinking and littering were enforced as strongly as laws against other crimes are. The reality is, we can all learn from our mistakes. The problem comes when we forbid others the right to recover from their faults.

I think one of the best things about the Inside-Out Prison Exchange is that ignorance is essentially eliminated in the outside participants, such as myself. The program teaches us not only to improve the ways we think about ourselves but also to improve the ways we think about others, regardless of sex, race or religion, or their choices and the ensuing predicaments.

I am extremely grateful for having had this opportunity—knowing that I could be a part of something meaningful in a world where things don’t always make sense. ■

Meeting my classmates and having meaningful interactions with them has shown me the resilience that exists within us all. —MATTHEW, PSYCHOLOGY MAJOR, CLASS OF 2014



THE EXCHANGE

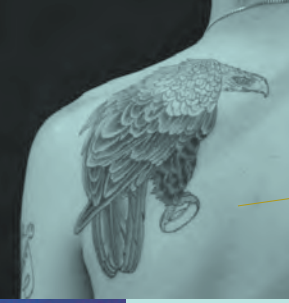
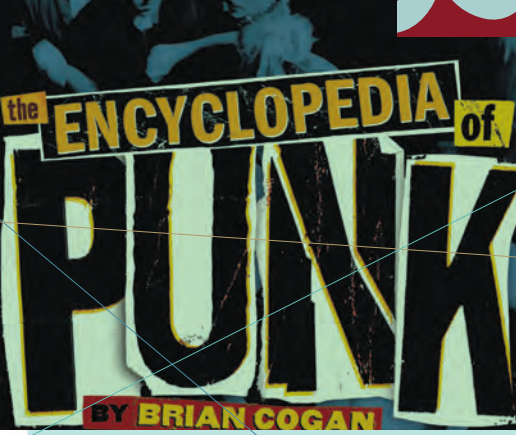
An inside student named Malik shares his perspective on the Inside-Out Prison Exchange Program, a class in the Department of Criminal Justice that has become an international educational model.

I took this class because I wanted to challenge myself with something new. I didn’t know what the class was about, but the words “criminal justice” stuck out to me.

When I received my papers back and saw that my grades were good, it made me want to continue having the opportunity to learn in a school setting. I truly wish the class had been five days per week, because I always counted the days until I went back.

The things I learned—why crime happens, rehabilitation, punishment and more—have made me want to be a part of the solution. I have to be proactive in making a successful re-entry into my community.

Experience is the only way a person can have an effective understanding of what really takes place behind prison walls. The outside students didn’t make me feel different from them, and I applaud each and every one of them for their unbiased, open-minded way of being. I did not feel incarcerated in class—I felt like I was free. I’m going to be sure to gather information so that when I am released I can enroll in the Community College of Philadelphia.



CREATIVE CLASS

GRAPHIC DESIGN IS NOT JUST FOR 'MAD MEN' ANYMORE. STORY BY RENEE CREE, SMC '12



PHIL YARNALL, TYL '90



LANCE RUSOFF, TYL '96



EVAN DENNIS, TYL '02



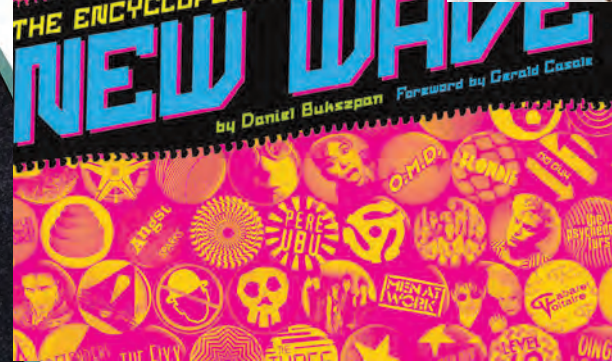
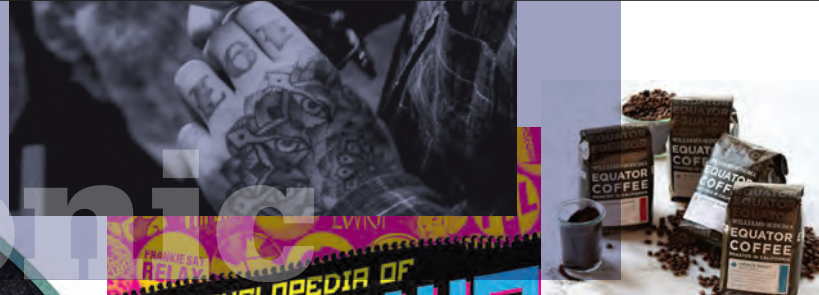
JESSICA HISCHIE, TYL '06



SOLVITA MARRIOTT, TYL '07



ERICA WERNICK, TYL '08



One of the first professional graphic-design projects Phil Yarnall, TYL '90, created was a set of advertisements for *HITS* magazine. He was hired by Peter Corrison, TYL '72, then the creative director of Chrysalis Records (and also the designer of iconic album covers such as Led Zeppelin's *Physical Graffiti* and the Rolling Stones' *Some Girls*). For his work, Yarnall says he was paid a shoe full of money—literally.

"They gave me \$1,500 and I went to a bank and cashed that check, and then went limping down the street with this wad of cash jammed into my big, black cowboy boot," he recalls. "But the whole time, I had this big grin on my face, and I was like, 'Yeah, I can do this.'"

"This" refers to becoming a renowned graphic designer in the music industry. For the past 20 years, Yarnall has designed products for musical acts ranging from Janis Joplin to Connie Francis to the Velvet Underground. Those products include an AC/DC box set packaged in a working amplifier and a compilation of Hank Williams' 1951 performances on the *Mother's Best Flour* radio show packaged in an antique radio that plays Williams' introduction on that program.

In addition to all that, Yarnall also is the official graphic designer for the Jimi Hendrix estate, designing posters, books, album covers and box sets related to the guitarist's work. After Hendrix's family won the rights to his music in the late 1990s, they wanted to re-release his entire catalog in a polished, high-quality manner. (Yarnall says the previous owner of the Hendrix catalog had

released some of the works, but they were of poor quality and released in a disorganized fashion.)

A representative of the family had seen some of Yarnall's work for PolyGram Records, his first job after graduating from the Tyler School of Art. The family wanted Yarnall and his business partner at the time, Stan Stanski, TYL '90, to work both on the re-release of Hendrix's music and the cover for the album Hendrix recorded just before his death in 1970.

"To have someone come and ask you to work on something iconic like that, you wonder, 'Can I do this?'" Yarnall says. "We just jumped right in, and started this connection with the Hendrix family that's lasted almost 20 years now."

Yarnall's story of success, and of being able to do what he loves, is one of many emerging from the Department of Graphic and Interactive Design in Tyler. Beyond the historically traditional ad-agency jobs like those portrayed on *Mad Men*, these graduates have parlayed their degrees into interesting and quirky careers in movies, television, music and even food.

KITCHEN CONFIDENTIAL

The high-end food retailer Williams-Sonoma is best known for its lines of gourmet food and its professional cookware, but Solvita Marriott, TYL '07, says the company's attention to product packaging also sets it apart from its competitors.

"There's a certain look [the company] has that customers expect," says Marriott, a senior packaging designer for Williams-Sonoma. "The projects I work on are really

nice; a lot of them are handmade. There aren't many companies that design the packaging so nicely."

This past winter, Marriott worked on the packaging for a line of seasonings for that retailer—small glass jars with vintage-looking labels and polished silver lids. She also worked on a line of holiday candies and a collection of gourmet chocolate bars. Marriott designed the envelopes in which the bars are wrapped and labels and gift tags.

Though Marriott did not set out to design specifically for the culinary world, her work for Williams-Sonoma is not her first foray into food-packaging design. In a freelance capacity, she also has created brand identities for a restaurant and a startup company specializing in artisanal food, both in her home country of Latvia. Prior to joining Williams-Sonoma, she designed labels, advertisements, store displays and promotional items for E. & J. Gallo Winery's Apothic line of wines.

For that winemaker's spring 2011 advertising campaign, Marriott designed two versions of an in-store ad. One featured a bottle of Apothic's white wine, backlit and surrounded by glowing white moths. In the second, a bottle of red wine was lit from above, a snake coiled around it.

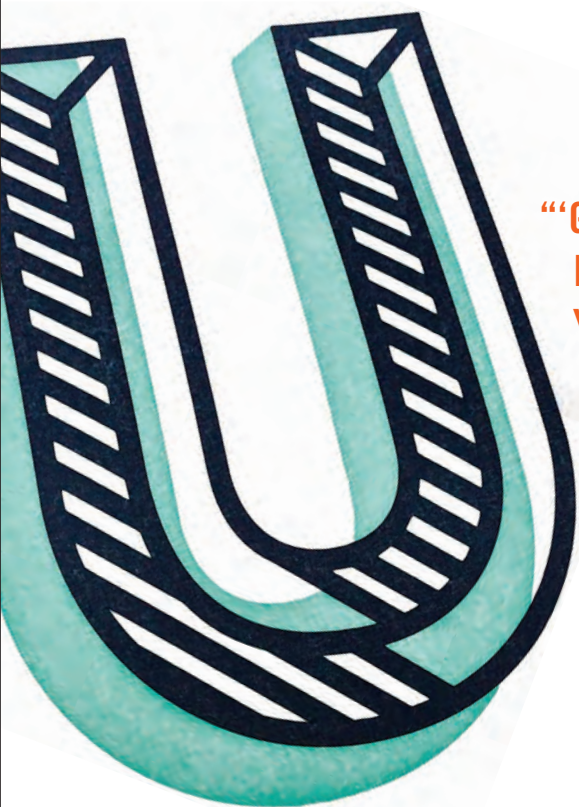
"Traditionally, the design for wine is quite serious," she says. "You have your images of grapes and cheeses, but Apothic is edgier. It's geared toward younger people. I worked on different concepts for how to show the wine and how to combine images in an appealing display."

LEADING IN LETTERING

Jessica Hische, TYL '06, also has designed for the food industry. Her antique-inspired, looped lettering has appeared in advertisements for Dove Chocolate, Special K cereal and Bertolli pasta. She has even created typefaces named after foods: Brioche, a modern take on a 19th-century font, and Buttermilk, a bold cursive. Hische draws heavily on antique samples to create her typography—a technique she learned through Louise Fili, a New York-based graphic designer whom Hische deems "a legend."

"She's pretty well-known for having a vintage style," Hische says. "I worked with her for more than two years, and during that time I was exposed to all different kinds of type. I had no idea lettering existed as an industry."





“‘GRAPHIC DESIGN’ DOESN’T ONLY APPLY TO PRINT. TODAY, IT’S ALL INTERACTIVE—ON YOUR PHONE, YOUR TELEVISION, YOUR COMPUTER. IT’S EVERYWHERE YOU ARE.”

—LANCE RUSOFF, TYL ’96, DESIGN DIRECTOR OF OFF-AIR CREATIVE, MTV NETWORKS

Indeed, when Hische was a student at Tyler, typography was not at the forefront of her career goals. “I was totally into all the classes I took,” she says. “So when I was doing photography, I loved photography. When I took painting, I loved painting.” But when she finally took graphic design, she felt she had found her niche.

“It was freeing,” she explains. “Once my teachers saw my work and how hard I was working, they let me be more experimental. I always loved to draw, and I began to incorporate a lot of lettering into my designs. I ended up falling in love with drawing again.”

While Hische worked with Fili, she also worked to get her own business off the ground. During the day she worked for Fili and on freelance projects at night. “There’s no shame in having a day job while you’re building a freelance career,” she says. “It can take a while to get paid for a job and diving in without a reserve can be stressful.”

Since embarking on a full-time freelance career in 2009, Hische has become something of a design icon herself. In 2011, she was included in *Forbes* magazine’s “30 Under 30” list for art and design. One of her biggest projects thus far was titling Wes Anderson’s 2012 film, *Moonrise Kingdom*. Hische worked directly with Anderson to create a modified version of Edwardian Script for the film’s opening and closing credits and for promotional posters. “I was amazed at how involved in the process he was,” she says.

HOLLYWOOD AND DESIGN

Not only do the titles and credits in movies need to be designed; so do the props actors use on camera. Erica Wernick, TYL ’08, had no idea that designers could be employed in that manner until she saw one listed in the credits of a film.

While an undergraduate theater major at Penn State, she thought such a position would be an ideal way to combine her love of both acting and art. “I started making flyers and posters for shows I would perform in,” she says.

Wernick transferred to Temple, and after graduating, she moved to Los Angeles to pursue a career as a Hollywood graphic designer. Within a few weeks of relocating, she got her first job, designing sets and props for the TV show *Trust Me*. Since then, she has done work for other TV series, including *The Middle*, *Brothers & Sisters*, *The Office* and *Glee*.

“*Glee* is fun,” she says. “The graphics are always quirky or different, and you never know what you’ll be working on.” For that show, Wernick has designed certificates that hang in faculty members’ offices, posters that adorn the walls of the fictional high school in which the show is set and a concession-stand sign for the school’s football stadium.

Though enjoyable, Wernick says that designing for a TV show can be hectic.

“An episode films about every eight days,” she explains. “As soon as I get the script, I read through it to see what graphics are needed, and I start working as quickly as

possible. I design something, and we print it up in just a few hours.”

Wernick—who last year designed and wrote *LA Bound*, a guidebook for moving to Los Angeles—also has designed for movies including *The Five-Year Engagement* and *The Goods: Live Hard, Sell Hard*. For the latter, she designed a manual for a toy called the Hippity Hop. “I learned how to make books at Tyler,” she notes.

Her goal is to have people recognize her graphics from the shows and movies in which they appear. “I worked on a couple of episodes of *Entourage*, and a friend of mine designed the movie poster in that show for [main character] Vinnie Chase’s movie *Aquaman*,” she says, adding that she has since seen the poster in friends’ houses. “It’s cool to design things that stick with people.”

AN ICONIC MAKEOVER

Lance Rusoff, TYL ’96, is behind the redesign of one of the best-known brands that sticks with people: MTV. In 2010, Rusoff—who is design director of off-air creative—helped give the network a face-lift. That included bolder fonts and cleaner, simpler graphic layouts. He also oversees design and branding for the network’s two biggest properties: the MTV Video Music Awards and the MTV Movie Awards.

“That has been one of the highlights of my career—updating such an iconic brand,” he says. “I’m proud of the MTV logo.” But he also admits it was a little intimidating. “We had to keep the essence of the brand and maintain what makes it unique,” he says.

As a part of his job, he does a little bit of everything. “I’m like a mad scientist when I work,” says Rusoff, who was nominated for a 2013 Daytime Emmy Award for his work as design director on the MTV series *I’m Positive*. “I’m all over the place. I like being connected to the work, picking the type settings, art-directing the photo shoots—things like that.”

Rusoff says a background in graphic design lends itself to working in TV. “I love typography, I love photography, and I love art, and this job combines all those things,” he explains. “‘Graphic design’ doesn’t only apply to print. Today, it’s all interactive—on your phone, your television, your computer. It’s everywhere you are.”

‘THE TYLER CONCEPT’

Since 2005, Evan Dennis, TYL ’02, has directed commercials, short films and music videos for clients including Mountain Dew, Guinness, Cartoon Network and Scion, and also for the university’s Temple Made campaign in 2012. (Also see: *Temple*, fall 2013, “Temple Made Originators,” p. 48.)

“In filmmaking, graphic design definitely comes into play,” Dennis says. “It’s very visual; you blend images with effects and music. I love how they all coalesce.”

One of Dennis’ favorite projects was *N.Y. Adorned*, a short film he directed for a New York-based tattoo shop and piercing parlor. “It was only the second project I did that was live action,” he says. “But it was something I was passionate about. [Tattoo culture] is thriving in New York—there are a lot of artists and shops—and it had never been represented in this way. I was a young filmmaker who could offer an authentic take on the culture.”

Dennis—whose ultimate goal is to direct feature films—says that in all his work, he strives to create something that will evoke an emotional response from viewers. “It can’t be anything forced or fake,” he says.

That philosophy echoes what Phil Yarnall calls “the Tyler concept.” That is, Tyler faculty taught him that everything he makes needs a reason for being.

“If someone asks you why you did something, you should be able to tell them,” Yarnall says. For example, he once used octopus tentacles as the font for a poster he designed for the 2001 New York Underground Film Festival. “It’s underwater, it’s underground,” he explains. “The movies are weird and freaky; octopus tentacles are weird and freaky.”

“I can answer those ‘why’ questions now,” he continues. “I couldn’t when I was a freshman and a sophomore. That ability has always been really key to what I do.” ■



GAME CHANGERS

Temple researchers explore how the body's bookmarks might prevent disease.

STORY BY ELISA LUDWIG, *CLA '99*

ILLUSTRATIONS BY NEIL WEBB

We know that smoking is bad for us and that we should watch our calories and get exercise. But what if we understood the ways in which unhealthful behavior could affect not only our own lives, but also the biochemical legacy we leave to our grandchildren? Could the toxins to which mothers are exposed before pregnancy make their children more susceptible to developing adult-onset diseases? And might the reverse also be true, that diseases could be prevented by eating well or taking supplements before or during pregnancy?

Researchers in the field of epigenetics are investigating exactly how human DNA is altered over time, both now and transgenerationally. In the School of Medicine's Fels Institute for Cancer Research and Molecular

Biology, Director Jean-Pierre Issa is working on several research projects that explore how our lifestyles affect epigenetics and how epigenetics affects our wellness.

In essence, epigenetics is the normal and natural process by which cells that contain the same DNA are differentiated. "Our body is made of one genetic code, one sequence of DNA," Issa says. "But within that code are epigenetic marks—a series of tags that can differentiate what type of tissue that DNA will form. If you consider DNA the book of life, you can think of those tags as bookmarks." The body has more than 200 tissue types, and an epigenetic tag helps the body compartmentalize the DNA and specifies "hair," "eyes" or "skin."

Unlike genetics, which involves changes in the DNA sequence, epigenetics is the

change related to how genes are expressed. Issa says that some of those tags change DNA through a process called methylation. But they also can act on histones—proteins wrapped in DNA.

"[Epigenetic tags] can hide genes, serving as gatekeepers for the DNA, saying, 'This one is good and you can use it to make RNA,' or 'Move along and don't look here,'" Issa explains.

Together, those tags are known as the epigenome, and scientists have been mapping it, in the same way they have mapped the human genome, to create a comprehensive framework for epigenetics research.

In addition to programming cells for various functions, epigenetic tags are responsible for certain diseases by turning a gene's "switch" on or off. Their organization

Though we cannot change our DNA sequences, we might be able to control how our bodies turn “on” genes that promote health and turn “off” disease-promoting genes.

can be inherited or accumulated over time, either through simple aging or environmental exposures. “Biochemical tags need to be reset constantly,” Issa says. “Every time a cell divides, and as it evolves and ages, the tags can potentially be affected.”

Some studies have shown that the food pregnant mice eat can lead to marked epigenetic changes in their offspring. And studies of mothers in Africa show that children born during times of the year when food availability ebbs or flows will have a corresponding epigenetic makeup.

Though we cannot change our DNA sequences, we might be able to control how our bodies turn “on” genes that promote health and turn “off” disease-promoting genes. Issa says it takes more than casual behavior changes in either direction to

make a difference. “Does that mean that eating a hamburger during pregnancy will negatively affect your child’s tags? No,” he says. “But it might if you’ve been eating one every day for years. We already know that exposures to certain substances such as arsenic, tobacco and BPA [a chemical used in making plastics] can alter DNA.”

AGING AND DNA

In the Fels Center, Issa is looking at DNA methylation across a number of studies.

In one study, animals subjected to caloric restriction had far less methylation, and their tissues appeared more youthful than those with nonregulated caloric intakes. Issa and his colleagues also examine chronic inflammation on an epigenetic level. They hypothesize that the regular use of aspirin could slow aging and prevent the onset of inflammatory bowel disease or chronic viral hepatitis because of the drug’s effects on the epigenes.

Though his research is in progress, Issa theorizes that our lifestyles might not affect our epigenetic makeup directly but rather the rate of epigenetic change as we age. “I personally believe that exposures and diets and lifestyle choices can change the rate of accumulation of these events, and what could be considered a healthful lifestyle would slow down the process of tag degeneration,” he says.

Though the term itself was first coined in 1942, epigenetics became a serious field of inquiry in the 1970s, when researchers Arthur Riggs and Robin Holliday proposed that chemical modifications of DNA could influence gene expression. In the 1990s, epigenetics gained momentum as scientists began to better understand the mechanisms

Ed Cunicelli



Jean-Pierre Issa (above), director of the Fels Institute for Cancer Research and Molecular Biology and professor of medicine in the School of Medicine, has been studying epigenetics—how human DNA is altered over time—for the past 25 years.

at work. Today, epigenetics is a dynamic discipline that has advanced genetics, genomics—the study of the genome, or the complete set of DNA within an organism’s cell—and molecular biology, extending beyond medicine to our understanding of human evolution.

Issa first became interested in the field about 25 years ago, when he was at Johns Hopkins University in Baltimore, and the field was fledgling. As a cancer physician and researcher, Issa was struck by the early hypotheses of scientists who found cancer patients’ tags abnormal compared to those in healthy patients.

“At the time, the general dogma was that cancer was caused by genetic damage to the DNA,” he says. “The researchers [at Johns Hopkins] were positing that it wasn’t just genetic, but a reshuffling of the tags that was causing cancer cells to grow. That idea was very attractive to me as a new way to understand the disease, and I started working in a laboratory with an investigator who was promoting it.”

All tags degenerate with age, and those researchers came to the conclusion that since cancers such as myeloid leukemia (that of the bone marrow) are more prevalent among older patients, there was an epigenetic cause. (Prostate and cervical cancers are other examples of cancerous growths that can be incited epigenetically.)

Perhaps most importantly, Issa’s work has shown that epigenetic cancers can be reversed with specific therapies: A decade’s worth of clinical study has contributed to the development of nontoxic alternatives to chemotherapy and radiation. Those drugs do not kill the cancer cells; they “replenish or rearrange” the epigenetic tags instead. They have served not only to help sick patients, but also as proof of concept that epigenetics is indeed at play in their diseases. Now Issa is working to develop new compounds that might have a similar effect, and he plans to do more clinical research around other epigenetically caused diseases, such as lung cancer.

POSSIBLE PREVENTION

In years to come, the study of epigenetics might affect the wider population, as research findings could empower individuals to make better decisions about their health and wellness. “There are no absolutes, but there are things we can do to prevent disease, and we’re trying to learn more,” Issa says. “With the right lifestyle, people who are genetically predisposed to cancer, for example, might be able to avoid it or get a much milder form of it than they might have gotten otherwise.”

With many epigenetic studies in their earliest stages, Issa is careful not to overhype such connections. “There are still many question marks around our lifestyle choices, whether its diet or exercise,” he says. “It should be emphasized that, thus far, our ideas are speculative. However, we do know that ultimately these discoveries could have great implications for our health.” ■

Elisa Ludwig, CLA '99, is a freelance writer living in Philadelphia.





An African sunset provides students with a backdrop during a service trip to Pretoria. Photo by Lezlie McCabe.

Through a Wider Lens

STUDENTS ARE TRANSFORMED
BY STUDYING ABROAD IN SOUTH AFRICA.

STORY BY JEFF CRONIN AND TAUHEEDAH SHUKRIYYAH ASAD

As Ian Watson, Class of 2015, prepared to study abroad in South Africa, he realized how little people knew about the country in which he would spend his summer. “Do they have the internet there?” someone asked him. “Don’t get eaten by lions,” another warned. Those rampant misconceptions about that nation inspired him to document the everyday people of Johannesburg with his camera.

Watson was among 17 Temple students who participated in the School of Media and Communication’s South Africa Study Away program last summer. Traveling across the country, the photographers documented all aspects of South African life, including mass media, politics, culture and economics in a postapartheid climate. They also visited historical landmarks such as the Apartheid Museum and the Cullinan Diamond mine.

Photographers chose their own themes for their photos. For example, Meaghan Pogue, Class of 2015, used South Africa’s Hare Krishna temples as a way to showcase the postapartheid era. “It seemed to me that inhabitants of neighborhoods were still determined by skin tone and, consequently, wealth,” she says. “But inside the doors of the Hare Krishna temples, all this was vastly different.”

The students’ work was a part of the South Africa program’s social-media coverage, which won a professional EPPY Award last fall from *Editor & Publisher* magazine. Here, *Temple* showcases some of the contemplative, compassionate photographs taken during that trip.

“My time in South Africa changed my entire perspective on community and human nature. The sense of community there is one that should be envied around the world.”
 —BEN HYCLAK, *SMC '13*



“Studying in South Africa made me feel more comfortable with my photography subjects. It also made me more self-aware, because for once I was in the minority. It took me out of my comfort zone.”
 —KELSEY DUBINSKY, CLASS OF 2015



Opposite page, top: On Mandela Day, July 18, South Africans gather in front of former President Nelson Mandela's home in the Houghton section of Johannesburg. Bottom: Students at Skeen Primary School in the township of Alexandra greet Temple students who have come to help paint and clean up the school. Photos by Lezlie McCabe, assistant director of Study Away programs.

Above: A 19-year-old boy who dropped out of high school is working to improve his life. Photos by Kelsey Dubinsky, Class of 2015. Left: Ian Watson, Class of 2015 (not pictured), focused his photography on documenting the lives of everyday people.

“There are so many people doing things to pursue their dreams and better themselves and their communities.”
—KELSEY DUBINSKY, CLASS OF 2015

“There’s a huge misconception in the U.S. about South Africa, and I hoped to show a small slice of how life really is there.”
—IAN WATSON, CLASS OF 2015



Above: The budding photojournalists document everyday life across South Africa, from Johannesburg to Pretoria to Durban, to help dispel stereotypes about that country. Photos by Lezlie McCabe. Left: During a weekend trip, students visit a beach in the city of Durban. Photo by Lezlie McCabe.

Opposite page, top: African independent churches use the Melville Koppies Nature Reserve for their Sunday services. The churches combine African traditions with Christianity. Dozens attend services on this ridge each weekend to worship. Photo by Lezlie McCabe. Bottom left and center: Students encounter native plants, impalas and more at Pilanesberg National Park, the fourth-largest park in South Africa. Photos by Kayla Oatneal, Class of 2015. Bottom right: A lion makes its presence known at the Lion Park, a sanctuary for endangered animals. Photo by Lezlie McCabe.

To view more student work, visit tusouthafrica.tumblr.com.

“We were constantly thrust into new experiences that came to shape us as journalists. A lot of what we saw was shocking. People live in vast poverty adjacent to extreme wealth, and that drives divisions between people who otherwise respect their fellow countrymen and -women.”
—NICHOLAS CUTRONA, CLASS OF 2015



EXPLORE THE WORLD WITH TEMPLE TRAVELS

Pack your bags and collect another (or a first!) passport stamp while exploring the world with fellow Owls and distinguished Temple faculty members.



Visit alumni.temple.edu/templetravels to sign up for the Temple Travels mailing list and to learn more about all the exciting destinations that await you in 2014.

CLASS NOTES

Alumni profiled in this issue work to effect change no matter where they are: A doctor provides pathways to brighter futures for underserved schoolchildren; a former diplomat dodges gunfire to ensure peace in war-ravaged areas; and a conductor builds bridges through music.

1950s

LOUIS F. DEL DUCA, *CLA '50*

was honored by the Pennsylvania Bar Association Business Law Section with the W. Edward Sell Business Lawyer Award. He was awarded for his “extraordinary contribution to the practice of business law” in Pennsylvania. He is professor emeritus in the Penn State Dickinson School of Law.

RONALD F. VELLNER, *CHPSW '52, '60*

published “Coming Home” in the March 2013 issue of *Military* magazine. A combat-wounded Korean War veteran, Vellner interviewed veterans from World War II, Korea and Vietnam for the story.

IRWIN LEVENTHAL, *EDU '53, '54*

was honored with the creation of the Leventhal Native Plant Garden in Whitemarsh Township, Pa. The garden was a gift from the Friends of the William Jeanes Memorial Library, of which Leventhal served as president for several years.

JANET M. YAMRON, *BYR '54*

has organized an annual reunion of Boyer College of Music and Dance alumni at each

American Choral Directors Association conference for the past 25 years. She also served on the Boyer faculty from 1966 to 2009 and as associate dean for undergraduate students for 28 of her 43 years at Temple.

JANE NORMAN, *EDU '56*

performed in *A Holiday Evening of Love* at 54 Below, a cabaret in New York City. That show was produced by Jim Kierstead, whose credits include *Pippin* and *Kinky Boots*. Norman was creator of and starred in *Pixanne*, a children’s TV program that aired in Philadelphia from 1960 to 1969 and was syndicated for another seven years.

1960s

BENNETT G. PICKER, *CLA '63*

was named the 2014 Philadelphia “Lawyer of the Year” in the arbitration category of *Best Lawyers* for the fourth consecutive year. He is senior counsel in the law firm of Stradley Ronon Stevens & Young LLP.

Class of 1964, your 50-year reunion will be held during Alumni Weekend, April 25-27!

JEFFREY R. WEISMAN, *FOX '64, '66*

was named a finalist in the “Best Photographs of 2013” contest in *Photographer’s Forum* magazine. It is his second year as a finalist in that competition. He exhibits in Sarasota, Fla., and East Hampton, N.Y.

MELVIN H. STEIN, *CST '66, PHR '69*

published *Odyssey of a Philly Boy: Serendipity, Tsouris and a Little Mazel* with Outskirts Press.

RONALD P. SPARK, *MED '67*

is technical expert in the University of Arizona Campus Health Service Clinical Laboratory. He is a clinical associate professor in the University of Arizona College of Medicine and a former president of both the Pima County Medical Society in Tucson and the Arizona Society of Pathologists.

LOUIS F. ROSE, *DEN '68*

received the 2013 “Gold Medal Award” from the American Academy of Periodontology.

That award is given in recognition of outstanding contributions to the field of periodontics.

BARBARA KLINE TAYLOR, *EDU '69*

was appointed interim dean of the College of Education in Western New Mexico University in Silver City, N.M.

1970s

TIMOTHY M. ERDMAN, *SMC '70*

published *Guaranteed Notes: The Demand for Perfection* with CreateSpace. It is a memoir chronicling the years Erdman and his brothers, Fredric and James, performed with the United States Marine Band.

CLEMENTINE “TINA” R. SLOAN GREEN, *CHPSW '70*

was inducted into the Philadelphia Sports Hall of Fame in November. She coached the Temple women’s field hockey and lacrosse teams for several years and is the only Temple coach to win three national championships.

VISIT ALUMNI.TEMPLE.EDU TO SHARE YOUR RECENT NEWS AND TO UPDATE YOUR INFORMATION.

ONLINE CLASS NOTES ARE RUN IN *TEMPLE* AND OTHER PUBLICATIONS.



JOSEPH MELROSE

DEGREE: MA, political science, College of Liberal Arts, 1969

OCCUPATION: “Mr. Fix-it”

LOCATION: Collegeville, Pa.

From growing up in Philadelphia to living in the embassy in Sierra Leone, retired Ambassador Joseph Melrose, *CLA* '69, has seen the world—and then some. A diplomat with more than three decades of service to the U.S. Department of State, Melrose has repaired U.S. embassies in Lebanon and Kenya after bombings in 1983 and 1998 and brokered a peace treaty in the war-torn nation of Sierra Leone. He also weathered an attack on his office while stationed in Damascus, Syria, when large crowds demonstrated outside and began throwing objects at the embassy.

“I look back and think I succeeded in making a difference.”

Through it all, Melrose has been guided by the strong, simple desire to “improve the situation and help the world.” Melrose dreamed of serving abroad, and after graduating from Temple in 1970, he accepted a U.S. State Department position in Vietnam as a civilian advisor to the government in Chau Doc

province. Since then, he has held high-level diplomatic posts in Pakistan, Syria and Nigeria and served as U.S. ambassador to Sierra Leone from 1998 to 2001.

Dubbed “Mr. Fix-it” by NBC News for his consistent role in restoring and maintaining order in difficult circumstances, Melrose says having “a certain amount of confidence and a certain amount of common sense” contributed to his diplomatic success.

The defining moment of his career came when he negotiated a ceasefire and brokered a peace treaty during the Sierra Leone civil war. He helicoptered in to the ravaged embassy in that country to monitor the situation on the ground before attending peace talks in Lomé, Togo, in 1999.

While there, Melrose helped create the Special Court for Sierra Leone—a collaboration between that country’s government and the United Nations—that brought to justice many perpetrators of war crimes. One of those perpetrators, former Liberian President Charles Taylor, was convicted in April 2012 for his role in that conflict. “I look back at something like that and think I succeeded in making a difference,” Melrose says modestly.

Melrose retired in 2001 but can still be called to action for special projects. For example, he served in various roles with the U.S. Mission to the United Nations and was vice chair of a panel that examined security issues in the aftermath of the Benghazi attack in September 2012. Today, he helps train the next generation of diplomats in his position as ambassador-in-residence at Ursinus College in Collegeville, Pa.

He notes, “I still think if I can help prevent another situation like Benghazi, if I can prevent another death, I still want to do it.” —*Alix Gerz*, *SMC* '03, *CLA* '07

She also is professor emerita in the College of Education and president of the Black Women in Sport Foundation, which seeks to increase the involvement of black women and girls in sports. She co-founded that organization with Alpha Alexander, *CHPSW* '78, '81, and Nikki Franke, *CHPSW* '74, '88, head coach of women’s fencing at Temple.

JOHN M. ROMAN, *SMC* '72
published *Ink in His Blood* with Infinity. Formerly, he was a reporter for several newspapers in suburban Philadelphia.

RICHARD P. AHLSTROM, *CLA* '73
was honored with the 2013 “Lifetime Achievement Award” from the Association of British Science Writers in June. He is science editor for *The Irish Times*.

LYNETTE E.W. BROWN, *THM* '73
was elected chair of the Business Valuation and Litigation Services Committee of the Maryland Association of Certified Public Accountants. She is a director in the litigation practice of Invotex, a financial consulting firm. She also is an adjunct professor in the Georgetown University Law Center.

ALAN M. FELDMAN, *CLA* '73, *LAW* '76
was included in the 2014 edition of *The Best Lawyers in America*. He is a managing partner in the law firm of Feldman Shepherd Wohlgelernter Tanner Weinstock & Dodig LLP in Philadelphia and is on the board of visitors in the Beasley School of Law.

BREN W. NORRIS, *BYR* '73
sang in a virtual choir at Disneyland’s *World of Color—Winter Dreams* holiday show. That choir was composed of video of hundreds of singers projected onto falling snowflakes.

JEFFREY S. SHARE, *SMC* '73
received the 2013 “Lone Star Award” from the Houston Press Club for his article “The Day Our World Changed” in *Pipeline & Gas Journal*.

ROBERT J. WRIGHT, *EDU* '74
published *Research Methods for Counseling* (2014) with SAGE. It is his fourth published textbook. He lives with his wife Jeanne, *EDU* '80, in Bonita Springs, Fla.

LEE ALBERT, *EDU* '75
is a partner in the the law firm of Glancy Binkow & Goldberg LLP’s New York office. He represents clients in cases concerning

violations of federal and state antitrust and securities laws, mass tort and product liability, and unfair trade practices.

DIANE V. HEERY, *TFM* '76
was nominated for an Emmy Award for “Outstanding Casting” for the miniseries *Political Animals* and won an Artios Award for “Location Casting” for *Silver Linings Playbook*. The latter honor is given by the Casting Society of America.

HAL MARCOVITZ, *SMC* '76
published *Olé! Capturing the Passion of Bullfighters and Aficionados in the 21st Century* with 4 Square Books. He also published *My Life With Wings* with Aficion.

LOIS LAWSON-BRIDDELL, *SSW* '77, *CLA* '78
organized two screenings of *Girl Rising*, a documentary about nine girls from different parts of the world who overcome unbelievable obstacles while becoming educated. The screenings took place in Philadelphia and Turnersville, N.J., in October.

RICHARD J. BRIGGS, *TYL* '78
curated and participated in an exhibit titled *Let’s Get Physical* at the Ventana244 gallery in Brooklyn, N.Y., in October and November.

ROSEANN B. ROSENTHAL, *CLA* '78
received the Iris Newman Award from the Alliance of Women Entrepreneurs in November. That award honors female business leaders who are committed to advancing women entrepreneurs. Rosenthal is president and CEO of Ben Franklin Technology Partners of Southeastern Pennsylvania.

DEBRA J. SILIMEO, *SMC* '78
was recognized as one of 2013’s “Women Who Mean Business” by the *Washington Business Journal*. That honor recognizes influential businesswomen in the Washington, D.C., area. Silimeo is executive vice president of Hager Sharp, a communications firm.

JOSEPH D. MANCANO, *LAW* '79
was included in the 2014 edition of *The Best Lawyers in America* for white-collar criminal defense. He is a partner in the law firm of Pietragallo Gordon Alfano Bosick & Raspanti LLP in Philadelphia.

CRAFT YOUR LEGACY WITH TEMPLE EASY. PERSONALIZED. MEANINGFUL.

giving.temple.edu/giftplanning

Working with you and your advisors, the Temple University Office of Gift Planning can help you achieve your long-term financial goals while contributing to Temple’s legacy of highest-quality, affordable education.

Office of Gift Planning
215-926-2500 giftplanning@temple.edu



JORDON N. ROSEN, *FOX* '79

was named a 2013 “Five-Star Wealth Manager” by *Philadelphia* magazine in November. He is director of the tax and small-business section in the accounting firm of Belfint, Lyons & Shuman PA.

CLAIRE SMITH, *SMC* '79

was awarded the first-ever Sam Lacy-Wendell Smith Award from the University of Maryland Shirley Povich Center for Sports Journalism in College Park. That honor is given to journalists who have made significant contributions to racial and gender equality in sports. Smith is news editor at ESPN and has been a sportswriter and editor for publications including *The New York Times* and *The Philadelphia Inquirer* for more than 30 years.

1980s

DAVID C. PECORARO, *TFM* '80

published *The Caring Professor: A Guide to Effective, Rewarding, and Rigorous Teaching*. It is available for purchase online.

PATRICIA A. ROMEU, *SMC* '82, '88

won a News & Documentary Emmy Award in the category of “Outstanding Historical Programming—Long Form.” She was recognized for her work as co-producer of *The Loving Story*, a documentary about the Supreme Court case of *Loving v. Virginia*.

DEBORAH MCGANN HEATON, *TYL* '83

was appointed director of development for the Partnership for the Delaware Estuary. In that role, she helps expand efforts to protect and restore tidal wetlands and shellfish in the Delaware River and Bay.

CHARLES J. MEYER, *CHPSW* '83, *LAW* '86

was appointed to a three-year term on the disciplinary board of the Supreme Court of Pennsylvania. He is a shareholder in the law firm of Hofstein Weiner & Meyer PC in Philadelphia.

RAYMOND B. OSTROSKI, *LAW* '83

was appointed vice president and general counsel of Shenandoah Telecommunications Co. in Edinburg, Va.

SONDRA L. BARBOUR, *FOX* '85

was named one of the “50 Most Powerful Women in Business” by *Fortune* magazine. She is executive vice president of information systems and global solutions at Lockheed Martin.

MARGARET HENDERSON HAGER, *MED* '85

published *Farewell, Samsara: Selected Poems* in August. She debuted the book during the Collingswood Book Festival in New Jersey in October.

STEVEN H. FORD, *TYL* '86

collaborates with David Forlano, *TYL* '86, to create Ford/Forlano jewelry. In November 2013, their piece “Pillow Collar Necklace” was added to the permanent collection of the Philadelphia Museum of Art.

DAVID P. FORLANO, *TYL* '86

collaborates with Steve Ford, *TYL* '86, to create Ford/Forlano jewelry. In November 2013, their piece “Pillow Collar Necklace” was added to the permanent collection of the Philadelphia Museum of Art.

MARION K. MUNLEY, *LAW* '86

was honored with the 2013 “Woman of Excellence” award by the Greater Scranton Chamber of Commerce in November. That award honors women who make positive contributions to the development of the Scranton, Pa., region.

JAMES C. JARRETT, *FOX* '87

is a partner in the accounting and business advisory firm of ParenteBeard LLC in Allentown, Pa. He provides audit, accounting and regulatory compliance expertise to financial institutions.

STEPHANIE M.G. WRIGHT, *EDU* '87

began a three-year term on the board of directors of the National Science Teachers Association. She is founder, president and CEO of the Delaware AeroSpace Education Foundation and director of the Delaware Aerospace Academy Environmental Outpost, both in Smyrna.

FLOYD D. RUMOHR, *TFM* '88

was appointed interim executive director of Apple Arts in New York City, a nonprofit organization that provides arts education to homeless children. He also published “Reflection and Inquiry in Stages of Learning Practice” in *Teaching Artist Journal*, Vol. 11, Issue 4.

1990s

PAUL E. BIAVA, *SMC* '90

is regional vice president of Comcast in West Palm Beach, Fla.

SUZANNE FELLMAN JACOB, *CLA* '91

published a short story titled “Johnny on the Spot” in the anthology *Death Knell V* by Infinity Publishing.

ELISE M. AUERBACH, *BYR* '92

performed piano in a concert titled *The Passion of Romanticism* in Cape May, N.J., in October. That performance was presented by Access to Art Inc., a nonprofit organization focused on bringing performance artists to Cape May County.

TODD M. HAY, *ENG* '92

is office director of the Edison, N.J., location of Pennoni Associates, an engineering, design and consulting firm. Hay is responsible for client service and business development in that office, and for managing the success and growth of that company’s staff and projects in northern New Jersey.

JASON WOODRUFF, *CLA* '92

is founder and president of Einstein Analytics, a firm in Shillington, Pa., that helps businesses hone their sales and marketing efforts and target audiences through data.

JULIANNE BLOISE, *SMC* '93

is manager of public relations for Austin Preparatory School in Reading, Mass. She also worked for 11 years at *The Eagle-Tribune* in North Andover, where she was a member of the team that won the 2003 Pulitzer Prize for Breaking News Reporting.

PAMELA J. THOMAS, *SMC* '95

received the Trailblazer Award from the Philadelphia Association of Black Journalists in October. She is editor of *Pathfinders Travel* magazine.

CLASS OF 1946



JEAN PROWATTAIN FRANTZ

DEGREE: BA, mathematics, College of Science and Technology, 1946

OCCUPATION: Historical homeowner

LOCATION: Post Falls, Idaho

When Jean Prowattain Frantz, *CST* '46, was one of only two women to graduate from Temple with a degree in mathematics in 1946, she embarked on a life filled with legacies. Now 91, Frantz’s legacy spans generations: She is a mother of five, a grandmother of 29 and a great-grandmother of 34.

She attended Bucknell University for two years in the early 1940s, until her family could no longer afford the tuition. So Frantz began saving, with an eye on Temple. “We had wonderful professors and good teachers,” she recalls. “I came by train, subway and bus every day, five days a week, from Princeton to Temple.”

Soon after Frantz graduated, her husband, Walter—an inventor of test equipment for RCA in New Jersey—was transferred to the West Coast. The Frantzes eventually made their way to Seattle, where they settled and raised five sons.

But perhaps her most intriguing and enduring legacy is the one standing proudly in the Wissahickon section of Fairmount Park in Philadelphia. Frantz’s great-grandfather, Evan Prowattain, built

the Hermitage mansion in 1848 in what was previously a settlement of Rosicrucians (a hermit-like religious sect; the street on which it is located is called Hermit Lane). In 1895, Prowattain sold the building to the city of Philadelphia for \$1. Frantz notes that the home was used as a performance space for the Delaware Valley Opera Company from 1980 to 2007. Now, it is overseen by the Fairmount Park Historic Preservation Trust. Hermitage sits on the precipice of a valley; in the photo above, Frantz stands on its grand wrap-around porch.

“I came by train, subway and bus every day, five days a week, from Princeton to Temple.”

Frantz and her children attended a ribbon cutting at the mansion in May 2013 after renovations of Hermitage were nearly complete. Frantz’s sons spent the day before the ceremony assisting with the house’s finishing touches.

Frantz also has an artistic legacy. She wrote *One Drop of Blood, Russian Blood*, a book of poetry published by Academy Books in 1991, in which she highlights her family’s Russian heritage and immigration. She also created stained-glass art for approximately 30 years. “I just love it,” she says. “The largest piece [I made] was 20 feet. I’d make things for homes and hospitals.”

Frantz now lives in Post Falls, Idaho, in Guardian Angel Homes, an assisted-living community established by her son Martin. —Maria Raha

KARL MIDDLEMAN

DEGREE: BM, music theory, 1976; MS, music composition, 1991; Boyer College of Music and Dance

OCCUPATION: Music man

LOCATION: Lower Merion, Pa.

Karl Middleman, BYR '76, '91, was only 16 years old when he picked up a baton for the first time and led the Philadelphia Classika Symphony, a racially integrated orchestra for teenage musicians he founded in 1970. After bowing to the audience following the first performance, Middleman was thrilled at the applause and could barely stand still.

“It was this pure love of music, this burning energy,” he says. “Conductors tend to be like generals, and we get really flushed with that sense of action and power. I was intoxicated by it, and I loved every moment I was in front of an orchestra.”

Then a trumpet player who recalls being “eager to create a new genre of concert presentations,” Middleman chose 50 student musicians of diverse ethnicities to form the orchestra. The group played pop-up concerts in places such as Rittenhouse Square and recreation centers across Philadelphia at a time when parts of the city were experiencing a rise in racially motivated violence.

“I was fortunate to grow up believing that music could be a healing force, no matter where it was played and no matter who was playing it,” says Middleman, whose mother was a square-dance caller and whose father often listened to radio broadcasts from the Metropolitan Opera.

“I was fortunate to grow up believing that music could be a healing force.”

Today he conducts the Philadelphia Classical Symphony, a chamber orchestra he founded in 1994 to put a new spin on standard symphonies and introduce audiences to classical music in cutting-edge ways.

Middleman strives to incorporate education, entertainment and audience participation in his concerts, which often are paired with meals, dance workshops and historical presentations. At one performance that featured works by Mozart, Middleman hired a historical dance company to re-create and teach dances from that era. At another, dueling sopranos held an onstage fight and he encouraged the audience to join in the fracas.

“It becomes a mini-cultural immersion, a visceral experience,” he says. “I feel like a conduit for something special, and hopefully people see that I passionately love what I’m doing.”
—Kristin Boyd, SMC '02



Ryan S. Brandenberg

SAMANTHA LEVINE DAWSON, EDU '96, '00

published *Ready, Set, Parent: Dr. Moms' Guide to Parenting* with CreateSpace. Dawson co-authored that book with Elizabeth Marsh Vantre, EDU '98, '00.

STEPHEN F. GAMBESCIA, CLA '96

was promoted to full professor in the College of Nursing and Health Professions at Drexel University. He also is assistant dean of academic and student affairs.

JASON W. GEORGE, TFM '96

played Juror Eight in *Twelve Angry Men*, staged at the Pasadena Playhouse in California in November and December. He also has acted on *Grey's Anatomy*, *Mistresses* and many other TV series.

PAUL BENCIVENGO, FOX '97, THM '99

was listed on the “Bucks County Forty Under 40” by the *Bucks County Courier Times* and *The Intelligencer*. That list recognizes young professionals in Bucks County, Pa., who make a difference in the workplace and their communities. He is marketing and communications director of Visit Bucks County.

CHAD C. EVERETT, TYL '97

showed his work in his traveling art exhibition *Human: Trials, Transformation, Triumph—Believe the Hype, a Story of Enlightenment*, a collection that spans 20 years.

KELLY GEOGHAN, POD '97

traveled to Haiti in October 2013 to treat survivors of that country's 2010 earthquake.

JEREMIAH C. JOHNSON, TYL '97

participated in several exhibitions in 2013. He also will have a solo exhibition titled *Hard Work* at Converge Gallery in Williamsport, Pa., this spring.

KELLY S. JONES, FOX '97

is senior vice president of human capital solutions at the SI Organization Inc. in Valley Forge, Pa. He also is an executive board member of the Center for Autism Research.

JASON R. MOLLICA, SMC '97

presented “CEO of You: Creating Your Personal Brand” at the Public Relations Student Society of America 2013 National Conference in October.

JAMES A. BRYANT, CLA '98

published two books, *If Words Could Talk What Might They Say? Poems to Whom It May Concern* and *H.A.T.E.—Honest and Truthful Experiences: Poems for the Heart, Mind and Soul*, both with CreateSpace. He also is CEO of Inspiring Minds 7, a website that seeks to uplift and motivate its visitors.

ELIZABETH MARSH VANTRE, EDU '98, '00

published *Ready, Set, Parent: Dr. Moms' Guide to Parenting* with CreateSpace. She co-authored that book with Samantha Levine Dawson, EDU '96, '00.

STANLEY E. LUMAX, SMC '99

joined Nike Inc. as brand director of Nike Basketball in the eastern territory in May 2013.

MAASI J. SMITH, POD '99

is a podiatrist with Urban Health Initiatives, a community-based organization in Philadelphia.

He is a medical contributor to the city's CBS and NBC affiliates and also appeared in the Emmy Award-winning special *Black on Black* on the local Fox affiliate. Smith was featured in an Oct. 28, 2013, article in the *Philadelphia Daily News* for his novel *Mischiefmakers*, now in its second printing. He also is working on a foot-care book due to publish this spring.

2000s

PENIEL E. JOSEPH, CLA '00

published *Stokely: A Life*, a chronicle of the life of civil rights activist Stokely Carmichael, with Basic Civitas Books. Joseph authored two previous works focused on race and the U.S. civil rights movement: *Waiting Til the Midnight Hour* in 2006 and *Dark Days, Bright Nights* in 2010. He is professor of history at Tufts University.

SOPHIA LEE, LAW '00

was honored during the Vivant Salutes! Women in the Corporate World gathering at Vivant Art Collection in Philadelphia. That event honors women of color who are influential in their fields. Lee is senior counsel of Sunoco Inc.

BRIAN R. OSZYMANIK, TYL '00

received a 2013 “Young Architects Award” from the Philadelphia chapter of the American Institute of Architects in October. That award is presented annually to a registered architect member between the ages of 25 and 39 who displays excellence and promise of future merit in design, practice, education or service.

CHARLES O. ANDERSON, BYR '02

performed *Restless Natives*, a dance piece inspired by the writings of James Baldwin, at Temple's Conwell Dance Theater in October. Anderson is associate professor of African-American and African-diasporic dance and head of the MFA program in dance in the University of Texas at Austin.

DENISE E. THOMPSON, TYL '02

received a 2013 “Young Architects Award” from the Philadelphia chapter of the American Institute of Architects in October. That award is presented annually to a registered architect member between the ages of 25 and 39 who displays excellence and promise of future merit in design, practice, education or service.

ROBERT J. BELL, CHPSW '03

published *The Hinge: The Importance of Mental Toughness*, with DRB Press in October. He is a sport psychology coach in Indianapolis.

JASON R. BOURNE, DEN '03, '04

celebrated the 10th anniversary of his practice, Bourne Orthodontics, in October.

SEAN H. MCKOY, SMC '03

is president of Reel McKoy Media. That company produces *Unskripted*, an online video series featuring vignettes about people effecting positive social change in their communities. Robert Jones, SMC '04, is a consulting producer for the series.



LYNNE HOLDEN

DEGREE: MD, School of Medicine, 1991
OCCUPATION: Medical mentor
LOCATION: Bronx, N.Y.

For most of her medical career, Lynne Holden, *MED '91*, focused on healing patients and sending them home from the hospital. Now she tries to bring people *into* hospitals as founder and president of Mentoring in Medicine Inc., a Bronx-based nonprofit organization that directs students of all ages toward careers in medicine.

“Our mission is to empower students to become health professionals,” Holden says. “We do that in an engaging way, entering the lives of students who are disadvantaged in some way.”

“I wanted to be the feet on the street, trying to recruit students who have dreams but don’t know how to realize them.”

Elementary-school children can participate in programs such as hip-hop stage plays, which introduce them to health concepts from heart disease to job opportunities in healthcare. As students progress in their education, they can participate in rigorous course

work through virtual summer camps that cover topics including advanced biology and research methods. College undergraduates can gain healthcare experience by performing community outreach.

The ideas for such initiatives came from Holden’s own experience growing up in the Philadelphia neighborhood of Mount Airy, which lacked a support system for budding health professionals.

“I knew I wanted to become a physician as early as elementary school, but it wasn’t easy to find mentors or programs to help me pursue my dream,” Holden says. “As an undergrad [at Howard University], I did summer sessions to enrich my learning, but there was no continuity. I’d go to one for six weeks, and that was the end of it.”

Holden’s passion for education took hold in 1994, after she joined the admissions committee of the Albert Einstein College of Medicine at Yeshiva University in New York City.

“I realized I wanted to be the feet on the street, trying to recruit students who have dreams but don’t know how to realize them,” she says. “A lot of students don’t have any role models or have low self-confidence.”

Since its founding in 2006, Mentoring in Medicine has reached more than 25,000 students and has expanded to cities including Atlanta; Detroit; Oakland, Calif.; Philadelphia; and Washington, D.C.

Holden is amazed consistently by the students’ transformations. “I’ve had students say they were told they would never be a doctor,” she says. “And just a few years later, I have the honor of putting their white coats on them during their graduation ceremonies.”

—Kyle Bagenstose, *SMC '11*

To learn more about Mentoring in Medicine Inc., visit medicalmentors.org.

Ryan S. Brandenberg

Class of 2004, your 10-year reunion will be held during Alumni Weekend, April 25-27!

FREDERICK BARRETT, *BYR '04*
is a postdoctoral research fellow in the Behavioral Pharmacology Research Unit of the Johns Hopkins School of Medicine in Baltimore.

ROBERT JONES, *SMC '04*
is a consulting producer with Reel McKoy Media. That company produces *Unskripted*, an online video series featuring vignettes about people effecting positive social change in their communities. Sean McKoy, *SMC '03*, is president of Reel McKoy Media.

ROYCE W. SMITH, *LAW '04, '08*
spoke at the Pennsylvania Bar Institute’s Pretrial Practice Series in October. He also was included in the 2014 list of “The Best Lawyers in America,” and is an attorney in the law firm of Feldman Shepherd Wohlgelernter Tanner Weinstock & Dodig LLP in Philadelphia.

EVAN J. JONIGKEIT, *SMC '05*
was listed on the “Backstage 30,” a compilation of up-and-coming actors published in *Backstage* magazine. He has appeared in Broadway performances including *High* and *The Snow Geese*.

WILLIAM T. ZIEGLER, *EDU '05*
was named president of the Pennsylvania Association of Elementary and Secondary School Principals in November. He is principal of Pottsgrove High School.

AMY O. YEBOAH, *CLA '06, '08, '11, '13*
directed *Goodbye to City Schools*, a documentary about school closings in Philadelphia. The 30-minute film was produced as a part of her fellowship with the Notebook, a nonprofit organization that focuses on the state of Philadelphia’s schools. Her position was funded by the Samuel S. Fels Fund.

JANET A. DICKERSON, *SMC '07*
was profiled in an Oct. 23, 2013, article in *Clutch*, an online lifestyle publication for African-American women. Dickerson is co-founder and CEO of Pixel Prose Media, a marketing and branding firm based in Los Angeles.

JOHNNY R. GILL, *TFM '07*
was listed on the “Backstage 30,” a compilation of up-and-coming actors published in *Backstage* magazine. He has appeared in TV series such as *Rectify*, *True Blood* and *Bones*.

ASUKA GOTO, *TYL '07*
received a 2013 Artist Fellowship from the New York Foundation for the Arts in “Architecture/Environmental Structures/Design.” Only 3 percent of applicants are selected for that fellowship.

2010s
CHRISTIAN BOWERS, *BYR '10*
was accepted to the 2013-2014 Domingo-Cafritz Young Artist Program in the Washington National Opera. It is an intensive training program for emerging opera singers founded by internationally renowned singer Plácido Domingo.

DEBORAH WAXMAN, *CLA '10*
was named president-elect of the Reconstructionist Rabbinical College and the Jewish Reconstructionist Communities in October 2013. She is believed to be the first woman rabbi to lead a seminary and head a denominational movement in Judaism.

AMBER COWAN, *TYL '11*
showed her work at the 2013 Sculpture Objects Functional Art + Design fair in Chicago. She was represented by the Heller Art Gallery in New York. Cowan is an adjunct professor of glass in the Tyler School of Art.

BENJAMIN KALINA, *TFM '11*
directed and produced *Shored Up*, a documentary about coastal development and sea levels after Hurricane Sandy. It was broadcast on DIRECTV’s AUDIENCE channel in October. He also produced *A Sea Change*, a film about ocean acidification, and *Two Square Miles*, a documentary chronicling a small town’s fight to block a cement plant, which aired as a part of the *Independent Lens* series on PBS. Kalina is owner of Mangrove Media, a video production company in Philadelphia.

MATTHEW J. McLEAN, *CLA '11*
was recognized by the National Kitchen & Bath Association as one of the 30 most influential people younger than 30 in the

remodeling industry. He is president and CEO of Ferrarini Kitchen & Bath in Elkins Park, Pa.

DIANA FERNANDEZ, *SED '12*
received a Student Award of Excellence from the American Society of Landscape Architects with Amy Syverson, *SED '12*, in November. They were honored for their senior project at Temple’s Ambler Campus, *Above Below Beyond*. It was an exhibition that showcased ways to reimagine the abandoned spaces that once made up the Reading Railroad in Pennsylvania.

CHERRI T. GREGG, *SMC '12*
was named “Journalist of the Year” by the Philadelphia Association of Black Journalists.

SHELLEY MILLER, *BYR '12*
won second place in the Academy of Vocal Arts Giargiari Bel Canto Competition in October.

AMY SYVERSON, *SED '12*
received a Student Award of Excellence from the American Society of Landscape Architects with Diana Fernandez, *SED '12*, in November. They were honored for their senior project at Temple’s Ambler Campus, *Above Below Beyond*. It was an exhibition that showcased ways to reimagine the abandoned spaces that once made up the Reading Railroad in Pennsylvania.

Post your class notes online!
Visit alumni.temple.edu/classnotes to share your recent news and update your information. Online class notes are run in *Temple* and other publications. You also may mail your notes to:
Editor, *Temple*
Bell Building, 3rd floor
1101 W. Montgomery Ave.
Philadelphia, PA 19122

IN MEMORIAM

This list includes those in the Temple community who have passed away since the last issue of Temple.

1930s

Louis Finkelstein, *PHR* '38
Richard C. McCloskey, *MED* '39

1940s

Joseph Hahn, *PHR* '40
Marvin Bresler, *PHR* '41
Donald G. Fullman, *PHR* '41
Reuben Oren, *PHR* '41
Ralph W. Frantz, *PHR* '42
Philip Seltzer, *PHR* '42
Emanuel A. Cramer, *PHR* '43
Dorothy S. Gollub, *PHR* '43
Louis C. Selden, *PHR* '43
Blaine W. Miller, *PHR* '44
Hillman Protas, *PHR* '44
J. Stephen Kurtz, *MED* '45
Nicolas E. LaRocca, *DEN* '45
Joseph Lief, *DEN* '45
Bernard Pocrass, *PHR* '45
Theodore Ribak, *DEN* '45
Arthur Bersh, *PHR* '46
Angelo E. DiAntonio, *FOX* '46
Dorothy E. Sholder Hofer, *CHPSW* '46
George Knast, *DEN* '46
Edward Wisniewski, *DEN* '46
Richard S. Heffner, *DEN* '47
Margarita Jauregui Holden, *DEN* '47
Anna B. Kost, *FOX* '47
Fred Krautheimer, *DEN* '47
Max Victor, *DEN* '47
Donald M. Birnbaum, *DEN* '48
Herbert B. Cohn, *FOX* '48
James J. Dunn, *DEN* '48

Nathan Eidelman, *PHR* '48
Harold M. Eiser, *DEN* '48
Martin D. Unger, *DEN* '48
David Babins, *PHR* '49
Orlando Campoli, *DEN* '49
Anthony R. Gallo, *PHR* '49
Jesse Gutman, *DEN* '49
Lloyd L. Levin, *CLA* '49
Warren C. Rozelle, *EDU* '49, '59
Robert Shapiro, *DEN* '49
Irvin Shpigel, *FOX* '49
James Talarico Jr., *EDU* '49, '53
Raymond A. White, *DEN* '49

1950s

Edward H. Barnett, *PHR* '50
Morde M. Bloom, *FOX* '50
Lucille F. Goss, *CHPSW* '50
Walter E. Kinsey, *DEN* '50
Donald H. Leatham, *FOX* '50
John E. Lebo Jr., *DEN* '50
Richard M. Leshner, *DEN* '50
Jerome B. Raphael, *DEN* '50
Charles A. Schiavo Jr., *FOX* '50
Clinton Schwartz, *PHR* '50
Arthur R. Taylor, *MED* '50
H. Newell Williams, *LAW* '50
Bernard V. DiGiacomo, *LAW* '51
Theodore Feldman, *DEN* '51
Chester L. Karwanski, *DEN* '51
Bernard N. Koch, *FOX* '51
Samuel S. Novich, *DEN* '51
Laura B. Quinn, *CST* '51
Louie E. Wright, *FOX* '51

Royce A. Fish, *ENG* '52
Thomas W. Flanagan, *DEN* '52
Rose G. Lopatin, *CHPSW* '52
Richard Malatesta, *EDU* '52
Albert P. Morgan, *MED* '52
Charles S. Rini, *DEN* '52
Arthur W. Russell, *FOX* '52
Peter C. Sandilos, *EDU* '52
Walter C. Vickers, *PHR* '52
Sheldon S. Weitzman, *LAW* '52
Yale Berelson, *DEN* '53
Irene Finkelstein Bodek, *EDU* '53
Sheldon M. Markind, *PHR* '53
Martin Musicant, *FOX* '53
Charles A. Paul, *CLA* '53
Henry Noboru Shibata, *MED* '53
Nathan C. Smith, *DEN* '53, '60
Russell E. Snyder, *ENG* '53
Donald A. Bachman, *CLA* '54
Walter Gentry Creed, *ENG* '54
Lawrence DiToro, *DEN* '54
Edward J. Filemyr III, *FOX* '54
Gerald E. Kramer, *PHR* '54
Edward J. Perri, *PHR* '54
Romeo A. Zaffiri, *CLA* '54
William R. Booz Jr., *EDU* '55
Louis M. Cacchio, *PHR* '55
Michael P.C. Creamer, *DEN* '55
Milton B. Goldentyer, *PHR* '55
Arnold S. Goldman, *DEN* '55
Richard H. Greaves, *ENG* '55
Robert D. Laurie, *DEN* '55
Everett H. Thompson Jr., *DEN* '55
Frank J. Truskolaski, *DEN* '55
Edith M. Blouch, *EDU* '56



Temple University Libraries

JAMES J. CLONEY, FOX '56

James J. Cloney, *FOX* '56, passed away in August at 83 years old. Cloney was a graduate of St. Joseph's Preparatory School in Philadelphia and majored in sales and marketing in the Fox School of Business at Temple. He was a stellar athlete on Temple's varsity football team, earning the position of team co-captain in his senior year. Cloney was known fondly as "Jungle Jim" for his exploits on the field. After graduation, he remained a generous donor and an active Temple alumnus.

Howard S. Glaser, *FOX* '56
David D. Jacobe, *PHR* '56
Lee R. Markowitz, *PHR* '56
Robert R. Senerchia, *DEN* '56
Joan O. Trotta, *EDU* '56, *CLA* '67
Leo A. Barone, *DEN* '57

Chris Borges-Flores, *DEN* '58
James J. Cattafesta, *FOX* '58
Karl Leon, *PHR* '58
Charles K. Rose, *DEN* '58
Rymer D. Davis, *CLA* '59
William F. Feather, *FOX* '59
Arthur J. Machulsky, *DEN* '59
Paul J. McDadem, *DEN* '59
Charles D. Shelmire, *ENG* '59
Mae S. Wingenroth, *EDU* '59

1960s

Albert J. Bartosic, *LAW* '60
Catherine Hammond, *CHPSW* '60
Jaroslaw Kaczaj, *CST* '60
Richard E. McGirl, *POD* '60
David Roda, *FOX* '60
Donald R. Chalmers, *EDU* '61
Ronald S. Cohen, *PHR* '61
Matthew J. Fevang, *DEN* '61
Flora Koons Hinkle, *PHR* '61
Joseph Patlovich, *MED* '61
E. Pedro Roberts Jr., *PHR* '61
Meade D. Schaffner, *DEN* '61
Robert S. Schoor, *DEN* '61
Francis X. Buono, *PHR* '62
Joseph C. Corbi, *CHPSW* '62
Martin E. Gibson, *PHR* '62
Eugene T. Spelman, *PHR* '62
Alfred R. Thornton, *ENG* '62
Edward W. Beyer, *FOX* '63
Karen S. Hack, *TYL* '63
John Matkowski, *DEN* '63
Nathan J. Vaccaro, *DEN* '63
Mark N. Weinstein, *CLA* '63, *DEN* '67
John E. Davies Jr., *ENG* '64
Alex Kobb, *DEN* '64
Lee A. Landy, *CLA* '64
Joseph H. Mulherin, *FOX* '64
Robert J. Murphy, *ENG* '64
Beverly A. Carmean, *EDU* '65

Donald Drace, *ENG* '65, '66
Robert J. Ehret, *FOX* '65
Nathan M. Rosenberg, *PHR* '65
Herbert Spolter, *MED* '65
Jill Felix Colton, *EDU* '66
Robert D. Mazzola, *MED* '66
John N. Falzetta, *EDU* '67
Charles S. Friedman, *DEN* '67
Dan P. Fomby, *DEN* '67
Elizabeth B. Zucker, *CHPSW* '67
Joan M. Brumberg, *EDU* '68
Enrique Fernandez, *CLA* '68
Joyce A. Glenn, *EDU* '68, '77
David I. Green, *PHR* '69
Frederick W. Herman, *EDU* '69
Sheldon D. Wexler, *POD* '69

1970s

Joseph L. England, *PHR* '70
Harvey S. Hawn, *EDU* '70
James E. Kipp, *MED* '70
Thomas A. Miller Jr., *CLA* '70, *EDU* '72
Constance O'Keefe, *CLA* '70
Juliet G. Stephan, *CHPSW* '70
William G. Vair, *PHR* '70
George S. Williams Jr., *CLA* '70
Michael M. Berue, *FOX* '71, '77
Bisby Canty Jr., *EDU* '71
Peter J. Cascella Jr., *PHR* '71
Harry J. Long III, *MED* '71
Jennie P. Loscalzo, *EDU* '71
Robert Ross, *LAW* '71
Guy Miller Kratzer, *CLA* '73
Stacey L. Schwartz, *CLA* '73, *LAW* '76
Denise M. Aiello, *EDU* '74
Daniel W. Herrmann, *CST* '74, *DEN* '78
Wayne John Pollari, *EDU* '74
Daniel J. Machon, *CLA* '75
Andrew Paradise, *CLA* '75
Augusta A. Clark, *LAW* '76
Alice Howe Palmer, *CHPSW* '76

Nathan K. Williams, *EDU* '76, '78
Robert J. Feeney, *CLA* '77
Shirley Warren, *BYR* '77
Stanley R. Brown, *FOX* '79
Donald E. Graham, *DEN* '79
Barbara R. Ramsey, *SSW* '79

1980s

Cindy E. Gold, *FOX* '80
Ellen J. Moffa, *EDU* '81
John F. Aubin, *FOX* '82
Albert F. Dagit, *CLA* '82
Martin S. Holzman, *PHR* '82
Arthur R. Alessandrone, *FOX* '83
Gail S. Colfelt, *EDU* '89
David Mantell, *LAW* '89
Robert J. Miller, *EDU* '89

1990s

Bradley W. Thoennes, *TFM* '90
Francis A. Nunan III, *DEN* '91
Gerald D. Hinkle, *LAW* '93
Deborah E. Fetner, *CHPSW* '94

CORRECTION

In the winter issue of *Temple*, Earl L. Stover, *DEN* '43, and Anthony Pellegrino, *LAW* '04, were listed as deceased incorrectly.

To submit a name for this list, email templemag@temple.edu.

You also may mail your notes to:

Editor, Temple Bell Building, 3rd floor 1101 W. Montgomery Ave. Philadelphia, PA 19122



School of Medicine

MARTIN GOLDBERG, CST '51, MED '55

Martin Goldberg, *CST* '51, *MED* '55, former faculty member and dean of the Temple University School of Medicine, passed away in June.

Goldberg earned a bachelor's degree in science from Temple in 1951 and graduated from the School of Medicine in 1955. He joined the faculty of the University of Pennsylvania, where he was appointed chief of the renal-electrolyte system in 1966. During his career, he became an internationally recognized authority in the field of kidney disease.

After serving as chair of the Department of Internal Medicine in the University of Cincinnati Medical Center, he returned to Temple in 1986 to serve as dean and vice president of the Health Sciences Center.

He also was a recipient of the Lindback Award for Distinguished Teaching, the School of Medicine's Distinguished Alumni Award and a mastership in the American College of Physicians.

“It looks like we’re terribly reckless people. But there was absolutely no one in Washington—[not] even the president—who dared hold J. Edgar Hoover to accountability. It became pretty obvious to us that if we [didn’t] do it, nobody [would].”

JOHN C. RAINES, PROFESSOR EMERITUS OF RELIGION, discussing his role in the 1970s burglary of an FBI office that exposed evidence of domestic surveillance, *The New York Times*, Jan. 7, 2014

SHOW AND TELL

Have you recently come across a quote from an Owl that inspired you? To share it, email the quote and the name of the person to whom it is attributed to templemag@temple.edu. It might be included in an upcoming issue of *Temple*.

1964, 1989, 2004: YOU’RE A PART OF SOMETHING BIG.

TEMPLE UNIVERSITY MILESTONE YEARS

Celebrate success and tradition • Build a legacy • Fuel the future of Temple University



BE A PART OF TEMPLE’S PROGRESS.

Make a gift to Temple and do your part.

Continue the Temple experience and honor your 10th, 25th or 50th anniversary by making an impact at Temple University. Alumni donors further strengthen the foundation of Temple.

During this milestone year, make your biggest gift yet.

giving.temple.edu/milestoneyears

Temple
Temple University
Bell Building, 3rd floor
1101 W. Montgomery Ave.
Philadelphia, PA 19122

Non-Profit
Organization
U.S. Postage
PAID
Temple
University



ALUMNI WEEKEND 2014

WHAT IS YOUR TEMPLE?

APRIL 25-27



For a full list of programs and to register, visit
ALUMNI.TEMPLE.EDU/ALUMNIWEEKEND.

MY TEMPLE IS MOVING FAST

5K Run and Family Fun Walk
Saturday, April 26

MY TEMPLE IS MY PLAYGROUND

Scavenger Hunt and Family Festival at the Bell Tower
Saturday, April 26

MY TEMPLE IS #CHERRYON

Cherry & White Spring Football Game
Saturday, April 26

MY TEMPLE IS A CELEBRATION

Reunions for the classes of 2004 and 1964,
Temple Student Government and Golden Owls
(classes of 1964 and earlier)
All weekend!



T ALUMNI



facebook.com/TempleAlumni



@TempleAlumni
#TempleAlumniWeekend
#MyTempleIs



Temple University
Alumni Group



#TempleAlumniWeekend
#MyTempleIs