

Summer 2016

A GUIDE TO

COMMUNITY RESOURCES

AT TEMPLE UNIVERSITY



Phil Fendy



TABLE OF *Contents*

COMMUNITY CONNECTIONS

WELCOME	2
COMMUNITY RELATIONS.....	3
FREQUENTLY CALLED NUMBERS..	4
FREQUENTLY ASKED QUESTIONS..	5

CAREER

Job Training	6
Hiring and Employment.....	7
Small Business Development..	8

EDUCATION

Middle and High School	
STEM	10
After School	12
Student Financial Services	12
Job Training	14
Arts Education	
Music Instruction.....	15
Media Arts.....	15
Adult	
Adult Education	16

HEALTHCARE

LOCATION INFORMATION	17
Medical Care	
Family Practice	18
Women and Infants.....	19
Dental Care	20
Specialty Health Services	
Heart Health	21
Other	22

ARTS AND CULTURE

Temple Libraries	24
Community Arts	25
Performing Arts	26

SAFETY AND SECURITY

Important Numbers	28
-------------------------	----

SENIOR CITIZEN SUPPORT

Senior Support Programs.....	30
------------------------------	----

Welcome



Dear neighbor:

Temple University runs hundreds of programs for the community, but we haven’t promoted them well to our neighbors.

Take our Kornberg School of Dentistry, which provides several free screening programs and steeply discounted dental care to more than 22,000 patients each year. Open and accessible to everyone—from infants to senior citizens—Temple Dental delivers the highest standard of care to neighboring residents, utilizing cutting-edge technology to meet all of your oral health needs, from basic examinations to advanced oral surgery.


If you’re interested in African American history, you can explore the Charles L. Blockson Afro-American Collection, a leading center for the study of the history and culture of people of African descent. It features more than 500,000 items, including books, manuscripts, sheet music, pamphlets, journals, newspapers, posters and photographs, as well as artifacts, such as statues and busts.

Have you heard of the Temple 20/20 Scholarship? It awards partial scholarships to students from the four zip codes around Main Campus. Dozens of talented, young North Philadelphians have already benefited from it.

As Temple’s president, I want all our neighbors to know about our resources.

Our relationship with you is very important and I look forward to strengthening our friendship in the years to come.

Sincerely,



Neil D. Theobald
President, Temple University

THE OFFICE OF *Community Relations*

Through supporting volunteerism and partnering with leading community organizations, Temple’s Office of Community Relations is a gateway to the many resources the university offers its neighbors. Located on Cecil B. Moore Avenue in the heart of North Philadelphia, the office manages community engagement.

COMMUNITY RELATIONS OUTREACH PROGRAMS	
Acres of Diamonds	The Office of Community Relations helps local non-profit and faith-based institutions located in the university’s catchment area secure teams of Temple volunteers for short term projects. The office also works to encourage community engagement among Temple’s student body. Call 215-204-7913 or email aswan@temple.edu .
Pan-African Studies Community Education Program (PASCEP)	PASCEP offers low-cost, noncredit continuing education classes, including GED diploma preparation and professional development programs. Read more on page 18. Call 215-204-1993 or visit temple.edu/pascep .
Annual Farmer’s Market	Every spring the Cecil B. Moore Avenue Farmers Market, located between Broad and 13th Streets, offers a wide variety of fresh produce and other foods. The market accepts payment via the Supplemental Nutrition Assistance Program (SNAP), Farmers’ Market Nutrition Program (FMNP) and Philly Food Bucks. Call 215-204-7913 or email aswan@temple.edu .



FREQUENTLY CALLED *Numbers*

Admissions	215-204-7200
Charles L. Blockson Afro-American Collection	215 204-4732
Community Updates Hotline	215-204-0044
Kornberg School of Dentistry's Dental Clinic.....	215-707-2880
Legal Aid	215-204-1800
Liacouras Center.....	215-204-2400
North Broad Physical Therapy Center	215-707-8877
Office of Community Hiring and Outreach	215-204-0677
Office of Community Relations	215-204-7913
PASCEP	215-204-1993
Paley Library	215-204-8212
Tax Assistance.....	215-204-5601
Temple Health	1-800-TEMPLE-MED
Temple Performing Arts Center	215-204-9860
Temple University Police	
For immediate assistance.....	215-204-1234
To report criminal activity (24-hour hotline)	215-204-6493

Every attempt has been made to include the most up-to-date information throughout this guide. Our offerings and programs are constantly expanding and evolving; therefore, some of the phone numbers or emails may have changed. If you have corrections or additions, please call **215-204-2941** or email **jburton@temple.edu**.

FREQUENTLY ASKED *Questions*

How can I find out more about community programs at Temple University?

The Office of Community Relations is your link to Temple University and all of the community programs, resources and services we provide. For more information, call **215-204-7913** or visit **temple.edu/community**.

How do I find out more about the admissions process?

Each year, Temple offers tours and visits for prospective students and their families. For more information, contact the Office of Admissions by calling **215-204-7200**.

Does Temple offer meeting space for local organizations?

Yes. Temple offers space to neighboring community groups to hold meetings and other events. Scheduling is handled on a case-by-case basis. Contact Ramona McCants at **215-204-2236** or **ramona.mccants@temple.edu**.

How can I find out about job training, hiring and employment?

Temple offers training workshops, job fairs and other employment programs for neighboring residents to help them advance in their current careers or land a new job. See pages 8 and 9 for resources and events.

Who can I contact about student behavior in the neighborhood?

For non-urgent matters, or to provide confidential information about student behavior, email us at **police@temple.edu** or call **215-204-6493** (available 24 hours). Please be advised that comments and questions are reviewed once daily, Monday through Friday.

Who do I contact about crime or an urgent matter?

If you want to report a crime in progress or need urgent help, **call 911 immediately**. See page 30 for more information.



Whether you're looking to improve your job skills or start a new career, Temple University offers several programs to help you take charge of your future.

JOB TRAINING

Monthly Job Readiness Workshops

Every month, Temple offers free job readiness workshops. These sessions provide local job seekers with information and resources to help gain a competitive edge in the job market. Topics include interviewing skills, office etiquette and more.
Call **215-204-0677** or email **mike.robinson@temple.edu**.

New Choices Career Development

This program provides instruction for unemployed members of the community who want to return to work. Coaches will work to help participants gain paid entry-level positions in technology and health-related fields and offer mentorship support.
Call **215-204-7491** or email **cspcd@temple.edu**.

New Opportunities Workshop (NOW)

The New Opportunities Workshop (NOW) is a free, eight-week professional development course for local unemployed job seekers (or current working professionals) seeking employment or a career transition. Training is offered twice a year. Participants are recruited via direct inquiries, referrals from NOW alumni and other community referral sources.
Call **215-204-0677** or email **mike.robinson@temple.edu**.

Community Health Workers Training

Training provides students with the skills to apply for jobs as Community Health Workers. Eligible students can earn a tuition scholarship for this training, which equals 3.0 undergraduate social work credits.
Call **215-204-7491** or email **cspcd@temple.edu**.



MEET MICHAEL ROBINSON, director of community outreach and hiring in Temple's Office of Human Resources.

Michael Robinson manages employment outreach and job readiness training for nearby residents. He also serves as Senior Pastor of Greater Enon Missionary Baptist Church, 1854 N. 22nd St., in North Philadelphia, just minutes from Main Campus.

HIRING AND EMPLOYMENT

Neighborhood Job Fair

This free event takes place each May in McGonigle Hall, 1800 N. Broad St., and offers a range of opportunities from entry level to executive management.
Call **215-204-0677** or email **mike.robinson@temple.edu**.

Community Outreach and Hiring

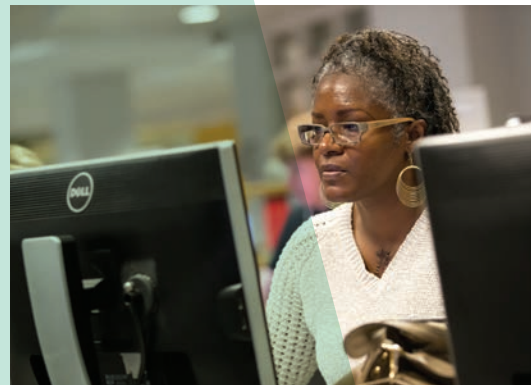
Temple's Community Outreach and Hiring initiative helps community residents find jobs through career-related events like job training workshops and the annual job fair.
To check out job openings at Temple, visit **careers.temple.edu**.



Each year, the Neighborhood Job Fair attracts thousands of local job seekers. This free event is one of the largest job fairs in the city.

SMALL BUSINESS DEVELOPMENT

Temple Small Business Development Center (SBDC)	The SBDC supports startup and existing ventures in the Philadelphia area through consulting, training and affordable office space. Entrepreneurs participating in the Center's Incubator program have access to conference rooms, WiFi, consultants, interns and training. Call 215-204-7282 or email sbdc@temple.edu .
The Entrepreneurial Success Workshop Series	Entrepreneurs learn how to write a professional business plan and gain the skills needed to start or manage a business through this workshop series. Participants get one-on-one attention and professional feedback. Call 215-204-7282 or email sbtrain@temple.edu .
Procurement Technical Assistance Program	The Procurement Technical Assistance Program provides information to help educate entrepreneurs about the government marketplace. Call 215-204-7282 or email sbtrain@temple.edu .
Going Global Series	This series of workshops aids business owners in navigating the ever-changing international marketplace. Participants will build skills, strategies, insights and a network of contacts that will enable them to expand their business. Call 215-204-3856 or email sbtrain@temple.edu .
Building Your Construction Business	The Construction Management Certificate Series is a nine-month series that provides business management tools to existing and aspiring independent contractors. Call 215-204-3856 or email sbtrain@temple.edu .



Temple's small business programs offer opportunities for small business owners.



MEET IZZAT RAHMAN, owner of Kayuh Bicycles & Café.

The Temple SBDC helped local entrepreneur, Izzat Rahman, with a business plan to help expand his bike business by adding a café.

Temple is a great place for adult and school-aged learners to explore their interests, meet mentors and plan their future.

MIDDLE AND HIGH SCHOOL

STEM

Temple's Science, Technology, Engineering and Math (STEM) programs provide middle and high school students with opportunities to learn about engineering and other applied sciences. STEM programs are offered free of charge.

ExxonMobil Bernard Harris Summer Science Camp

This two-week, academic, residential camp emphasizes building students' mathematics and science skills while introducing them to college life.
Call **215-204-3379** or email **embhssc@temple.edu**.

Logistics, Acquisitions & Supply System Operations (LASSO)

This two-week summer camp for eighth- to 12th-grade students builds skills in math, Microsoft Excel, teamwork and problem-solving. After completing the camp, eligible students may apply for part-time summer employment with the U.S. Navy and other federal partners.
Call **215-951-5652** or email **engineer@temple.edu**.

Mathematics, Engineering & Science Achievement (MESA)

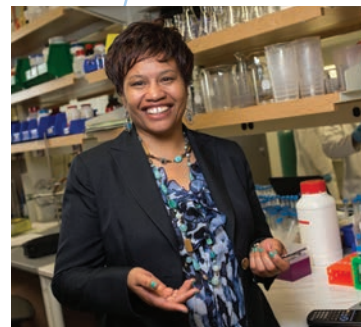
MESA is offered to sixth through 12th grade students in fall and spring on Saturdays and as a two-week camp in the summer. Each year MESA after school clubs compete for an all-expense-paid trip to the MESA USA national championships.
Call **215-204-6225** or visit **mesapenn.org**.

Computer Science Game Studio

Ninth through 12th grades students are eligible to explore how to write computer programs and coding for game development during this fun Saturday program offered twice yearly in the fall and spring.
Call **215-204-6225** or visit **mesapenn.org**.

Computer Science/ Technology Entrepre- neurship

This rigorous Saturday academy introduces middle and high school students to careers in coding. The academy is offered twice per year in the fall and spring. Instructors teach students how to analyze, design and develop games, mobile apps or digital media.
Call **215-204-6225** or email **mesapenn.org**.



MEET JAMIE BRACEY, director of STEM in the College of Engineering.

Jamie Bracey leads STEM programs and outreach initiatives in the College of Engineering. By making STEM programs more accessible she aims to increase the number of minority students who are interested in pursuing degrees in science, technology, engineering and math.



MIDDLE AND HIGH SCHOOL (cont'd)

AFTER SCHOOL	
Upward Bound	The Temple University Upward Bound program helps prepare Philadelphia public and charter high school students for college. Applications for Upward Bound are accepted year-round. Call 215-204-7653 or email upwardbound@temple.edu .
University Community Collaborative (UCC)	The UCC provides opportunities for youth and young adults ages 14 through 24 to participate in media and video workshops or trainings, leadership development programs and civic engagement. Call 215-204-6276 or email barbara.ferman@temple.edu .

STUDENT FINANCIAL SERVICES	
20/20 Scholarship	Temple awards up to 25 partial scholarships to ambitious, college-bound students who reside in North Philadelphia. Qualified applicants must be full-time residents of the 19121, 19122, 19132 and 19133 zip codes. Call 215-204-7200 or email askanowl@temple.edu .
Other Grants and Scholarships	Other grants and scholarships are also awarded by Temple to students based on GPA, interests and intended majors. Call 215-204-2244 or email sfs@temple.edu .



MEET NUALA CABRAL, media productions and communications manager for UCC.

A Temple alumna, Nuala Cabral helps high school students produce the award-winning “Presenting Our Perspectives on Philly Youth News” program. A director and editor, she uses her background in media to help youth develop their own voices and tell stories that are relevant to their lives.

Students from across the Greater Philadelphia area have access to enrichment programs on Temple’s campus.



MIDDLE AND HIGH SCHOOL (cont'd)

JOB TRAINING

Youth Employment Project	The Youth Employment Project at Temple University arms Philadelphia's youth, ages 17 through 24 years, with a high school diploma and education and career development services. Call 215-204-7491 or email youth@temple.edu .
Summer Job Shadowing Program	This program provides training to rising high school seniors. Eligible students will shadow and assist staff members while living on campus for a week. The cost of the program varies based on need; participation is limited. Call 215-204-2712 or email summer@temple.edu .
Summer Owls Leadership Experience	Through an on-campus experience, this one-week program gives highly motivated, rising high school juniors and seniors an enriching summer. Those who successfully finish the program and later enroll at Temple will receive a tuition grant. The cost of the program varies based on need. Call 215-204-2712 or email summerleadership@temple.edu .
Summer WorkReady	High School students can sign up for summer employment at Temple through this citywide youth employment program. The application process starts in May. Interested students can apply online at workready.org .
Achieving Independence Center (AIC)	Youth, ages 14 through 21, who are transitioning out of the foster system can utilize AIC for educational support services including GED training and college and career counseling. Call 215-574-9194 ext.232 or email harold.brooks@temple.edu .

More than 150 students from Philadelphia public and parochial elementary and secondary schools take part in the Community Music Scholars Program.



ARTS EDUCATION

MUSIC INSTRUCTION

Community Music Scholars Program	The Community Music Scholars Program provides a comprehensive program of jazz and classical music instruction for school-aged Philadelphia children who have limited financial means. The program offers individual lessons in all standard orchestral instruments, three levels of music theory and jazz and string ensembles. Call Melissa Douglas, program coordinator, at 215-204-8326 or email musicprep@temple.edu .
Philadelphia String Project at Temple University	Master teachers provide group instruction for fourth and fifth grade string students from Philadelphia and the surrounding area. No audition required. Rehearsals take place every Wednesday afternoon and Saturday morning, September through May. Call Melissa Douglas, program coordinator, at 215-204-8326 or email musicprep@temple.edu .

MEDIA ARTS

Digital Filmmaking Intensive	This two-week program for high school students of all levels focuses on the creative and technical fundamentals of screen-writing, cinematography, on-screen performance, directing, editing and sound for digital short storytelling. Dates: Monday, July 18–Friday, July 22 Hours: 9 a.m.–4 p.m. Tuition: \$1,000–includes camera, lighting and sound equipment, Mac-based editing systems and software. Application deadline July 11. Call 215-204-3859 or email deirdre.maitre@temple.edu .
Reel Girls: High School Film Workshop	Young women interested in film can attend this workshop every spring. Students are exposed to all aspects of film production. There is a \$30 application fee. Dates: This program runs during the spring semester. New dates will be announced in February 2017. Call 215-204-3859 or email ReelGirlsTU@gmail.com .

Temple University offers adults an opportunity to learn new skills, prepare for the job market or earn a high school diploma.

ADULT

ADULT EDUCATION	
Pan-African Studies Community Education Program (PASCEP)	Founded in 1975 by the late Annie Hyman, a Temple graduate and community activist from North Philadelphia, the Pan-African Studies Community Education Program offers low-cost, non-credit continuing education classes, including GED diploma preparation and professional development programs. Call 215-204-1993 or visit temple.edu/pascep .
Continuing Education	The Office of Continuing Studies offers adults an opportunity to pursue educational interests without being enrolled in a degree program. Students can take courses for a variety of reasons, including working toward college admission, professional development and personal enrichment. Call 215-204-2500 or email cstudies@temple.edu .
Workforce Education and Lifelong Learning (WELL)	This program offers GED diploma preparation for youth and adults ages 17 and older. WELL also offers financial literacy and work-force development. Call 215-204-2560 or email well@temple.edu .
Bridge to Postsecondary Education	Adults with High School or GED credentials receive assistance with transitioning to postsecondary education and training. Participants receive career and college exploration, assistance with enhancing academic skills for college credit bearing courses, and financial and health education. Call 215-204-2560 or email well@temple.edu .

Location INFORMATION

Temple Health has several campuses and locations across the Greater Philadelphia area. To make an appointment or find out about the services offered at each location, call 1-800-TEMPLE-MED.

Temple University Hospital
3401 N. Broad St.
Philadelphia, PA 19140

Temple University Hospital
Episcopal Campus
100 E. Lehigh Ave.
Philadelphia, PA 19125

Temple University Hospital
Northeastern Campus
2301 E. Allegheny Ave.
Philadelphia, PA 19120

Maurice H. Kornberg School of Dentistry
3223 N. Broad St.
Philadelphia, PA 19140

Foot and Ankle Institute
148 N. 8th St.
Philadelphia, PA 19107

Diabetic Center for Excellence
3223 N. Broad St.
Philadelphia, PA 19140

Fox Chase Cancer Center
333 Cottman Ave.
Philadelphia, PA 19111

Temple Health Connection
11th and Berks St.
Philadelphia, PA 19122



Temple University Health System provides a network of health-related services. The following pages are a partial list of community resources and medical specialty departments to help meet your healthcare needs.

MEDICAL CARE

FAMILY PRACTICE

Temple's family physicians treat the entire family—infants, toddlers, kids, teens, adults and senior citizens—with high-quality, compassionate care. Local offices offer regular checkups, including screenings and preventive care.

Practices	Allegheny Medical Associates 2317 E. Westmoreland St., Philadelphia, PA 19134 Call 215-926-3115 .
	Comprehensive Health Center 1 Temple Health—Episcopal Campus Call 215-707-1866 .
	Temple Physicians at Nicetown 4350 Germantown Ave., Philadelphia, PA 19140 Call 215-324-0500 .
	Temple Physicians at Hunting Park 133 W. Hunting Park Ave., Philadelphia, PA 19140 Call 215-324-0600 .
Fees and Insurance	Most insurances are accepted and a sliding scale is available if you're uninsured.



Temple University Hospital distributes baby boxes to all new mothers in an effort to provide newborns with a safe place to sleep and reduce rates of "co-sleeping," a practice where parents sleep in the same bed with their babies.



WOMEN AND INFANTS

Temple's **Center for Women and Infants** focuses on improving the health of moms and newborns. The center provides maternity medical care and support with prenatal care, breast-feeding, nutrition and family education, including an Infant Safe Sleep Program.

Practices	Faculty Obstetrics and Gynecology Practice Temple University Hospital—Outpatient Building Call 215-707-3008 .
	GYN/Family Planning Clinic Temple University Hospital—Outpatient Building Call 215-707-3232 .
	Comprehensive Health Center Temple University Hospital—Episcopal Campus Call 215-707-1840 .
	Women's Care at Northeastern Temple Health—Northeastern Campus Call 215-926-3700 .
Fees and Insurance	Most insurances are accepted and a sliding scale is available if you're uninsured.

DENTAL CARE

DENTAL SERVICES

The Maurice H. Kornberg School of Dentistry provides several free screening programs and discounted dental care to more than 22,000 patients each year. Open and accessible to everyone—from infants to seniors—Temple Dental delivers the highest level of care.

General	Comprehensive Care Clinic Hours: Monday–Friday, 8:30 a.m.–4:30 p.m. Call 215-707-2900 for admissions and screening appointments.
	The Children’s Dental Clinic provides emergency and preventive care for children ages six months through 15 years. Call 215-707-2863 for appointments.
Emergency Service Clinic	Hours: Monday–Friday, 8:30 a.m.–4:30 p.m. Patients may register after 7:30 a.m. In the event of emergencies or complications after 4:30 p.m. on weekdays, weekends or holidays, report to the Temple University Hospital Emergency Room , 3401 N. Broad St., or call 215-707-4545 and ask for the oral surgery resident on call.
GPHA, Inc. Medical Suite	In addition to dental treatments, this new clinic offers patients access to additional medical services, including sick visits, chronic disease management, preventive care, physicals and immunizations. Call 215-226-3789 to schedule an appointment, or stop by suite 136 on the first floor of the School of Dentistry.
Fees	Fees are based on a sliding scale depending on insurance, income level and age. The Temple Dental Pass program provides two full examinations, including x-rays, and two cleanings per year for \$99 plus 15% off any additional services.

SPECIALTY HEALTH SERVICES

HEART HEALTH

Temple Health has one of the most respected heart programs in the Delaware Valley. It offers a full range of treatments for people in all stages of heart disease, from the most common conditions to the most complex, including heart attack and high blood pressure.

Heart	Temple Heart and Vascular Institute Temple University Hospital Call 1-800-TEMPLE-MED.
	Vascular and Endovascular Surgery Temple Health—Northeastern Campus Call 1-800-TEMPLE-MED.
	If you believe you are having a heart attack—or someone you know is having a heart attack— CALL 911 IMMEDIATELY. Making the decision to call for medical help can save your life.
Stroke	Temple Neurosciences Center Temple University Hospital Call 1-800-TEMPLE-MED.
	The Philadelphia Aphasia Community at Temple seeks to enhance communication skills as well as the overall quality of life for people with speech difficulties caused by neurological disorders through individual and group speech therapy. Call 215-204-2453.
	If you believe you are having a stroke—or someone you know is having a stroke— CALL 911 IMMEDIATELY. Making the decision to call for medical help can make the difference in avoiding a lifelong disability.

SPECIALTY HEALTH SERVICES (cont'd)

OTHER	
Asthma and Lung Disease	Temple Lung Center Temple University Hospital Call 1-800-TEMPLE-MED.
Cancer	Fox Chase Cancer Center Call 215-728-6900. Cancer Center Temple University Hospital Call 1-800-TEMPLE-MED. The Cancer Support Community Temple University Hospital Call 215-707-6207.
Eye Care	Department of Ophthalmology Temple University Hospital Office: 215-707-3185 Appointments: 1-800-TEMPLE-MED
Foot Care	Foot and Ankle Institute Call 215-238-6600. Diabetic Center for Excellence Call 215-238-6600.
HIV	The Temple Comprehensive HIV Program Temple School of Medicine Call 215-707-2401 or 215-707-1800.

OTHER (cont'd)	
Physical Therapy	North Broad Physical Therapy Center Temple's community physical therapy center is geared to assisting uninsured and under-insured patients. Students and licensed therapists evaluate and treat patients of all ages suffering from muscle, bone, joint, balance or neurologic dysfunction. Please call your physician to obtain a referral. 1316 W. Ontario St. Call 215-707-8877 or email northbroadptcenter@temple.edu.
Skin Care	Temple Dermatology Temple University Hospital Call 215-707-3376.
Weight Loss/Management Resources	The Center for Obesity Research and Education (CORE) offers programs, clinics and education for children, adults and families. 3223 N. Broad St. (at Westmoreland) Call 215-707-8640. The Fresh Start to a Healthy Weight Center provides individual weight-loss counseling by a general internist. 1316 W. Ontario St. Call 215-707-1800.



Temple Health: Block-by-Block works to improve community health offerings by conducting door-to-door surveys in 11 zip codes including North Philadelphia, Strawberry Mansion, Kensington and Germantown.

Each year, Temple presents hundreds of world-class performances and exhibits and supports many community-oriented arts organizations.

The library includes special collections documenting the African American experience and North Philadelphia history.

TEMPLE LIBRARIES

Samuel L. Paley Library	Centrally located on Main Campus, this building holds the majority of the Library's book and journal collections in most subject areas. Visitors have access with a valid state ID. Reference Desk: 215-204-8212 Circulation Desk: 215-204-0744
Charles L. Blockson Afro-American Collection	This special collection includes more than 500,000 books and artifacts documenting more than 400 years of the African and the African American experience. The collection is open to the public from 9 a.m.–5 p.m., Monday through Friday. Call 215-204-4732 .
Urban Archive	Available online, this collection of digitized resources includes <i>Civil Rights in a Northern City: Philadelphia</i> , a detailed history of the modern civil rights movement in Philadelphia. Visit library.temple.edu or email urban@temple.edu .



MEET DIANE TURNER, curator of the Blockson Collection.

Diane Turner helps to collect and preserve the Blockson Collection, which was donated to the university by Philadelphia-based historian Charles L. Blockson in 1984. An accomplished historian, Turner is the author of the children's book *My Name is Oney Judge*, which tells the story of a young African American woman who was enslaved by President George Washington.

Members of the Greater Philadelphia community are welcome to join the Night Owls without an audition.



COMMUNITY ARTS

Singing Owls Campus Community Choir	Community members are welcome to join the Singing Owls without an audition. Singers learn and develop skills including breathing, diction, pitch, posture and rhythm. Members pay a per-semester fee of \$25. Contact Leslie Cochran at choirs@temple.edu .
Night Owls Campus/Community Band	The Night Owls Campus/Community Band is a large concert wind band made up of community members from the Greater Philadelphia area, Temple University students and staff. Members must have their own instrument and pay a \$25 per-semester fee. No audition required. Contact Deborah Confredo at deborah.confredo@temple.edu or 215-204-8649 .
The North Philadelphia Youth Advisory Council	Students who are interested in the arts are selected at the recommendations of counselors, teachers and principals at schools around North Philadelphia to participate in the council which creates public arts programs. The program is affiliated with the Tyler School of Art. Contact the Youth Advisory Council at northphillyyouthadvisorycouncil@gmail.com .

PERFORMING ARTS

Temple Theaters	Temple Theaters offers matinee performances for school children and dynamic evening performances for local theater goers. For information about specific showtimes, visit tfma.temple.edu . Tickets are \$25 (general admission) and \$20 for seniors, students and Temple University employees with OWLcards. Call 215-204-1122 or email theater@temple.edu .
Temple Performing Arts Center	This northern anchor of the city's Avenue of the Arts provides year-round opportunities to experience an array of cultural and artistic offerings. In addition to presenting its own season of performances, TPAC hosts numerous university and community events. The venue can also be booked for private or public events and engagements. Call 215-204-9860 or visit templeperformingartscenter.org .
Boyer College of Music and Dance	The Boyer College presents a wide variety of music and dance performances, concerts, recitals, master classes and lectures each year. All events are open to the public. Unless otherwise noted, events are free. Email lfiore@temple.edu .
The Conwell Dance Theater	Nearly every week, Temple dance students and faculty offer free or low-cost performances to the community. The theater also brings in various professional artists for residencies, performances and master classes each season. Call 215-204-8301 or email boyer@temple.edu .



The 2016-17 season marks the 49th Anniversary of Temple Theaters, the production performance program of the Department of Theater. All performances are open to the public.

PERFORMING ARTS (cont'd)

Diamond Screen Festival	The annual Diamond Screen Film and Media Arts Festival showcases the most creative and outstanding student work in the documentary, narrative, experimental, animation and media arts categories. Free and open to the public. Email caehlin.bell@temple.edu .
Liacouras Center	The largest indoor, public venue north of City Hall, the Liacouras Center is a full entertainment arena featuring concerts, family shows, Temple men's and women's basketball games and more. Call 215-204- 2400 or visit liacourascenter.com .

SAFETY AND SECURITY

Temple University’s Department of Campus Safety Services is a full-service police and security organization of well-trained professionals who provide safety and security to the community. The university is patrolled 24 hours a day by vehicle, foot and bike.

Temple Police patrol zone includes:

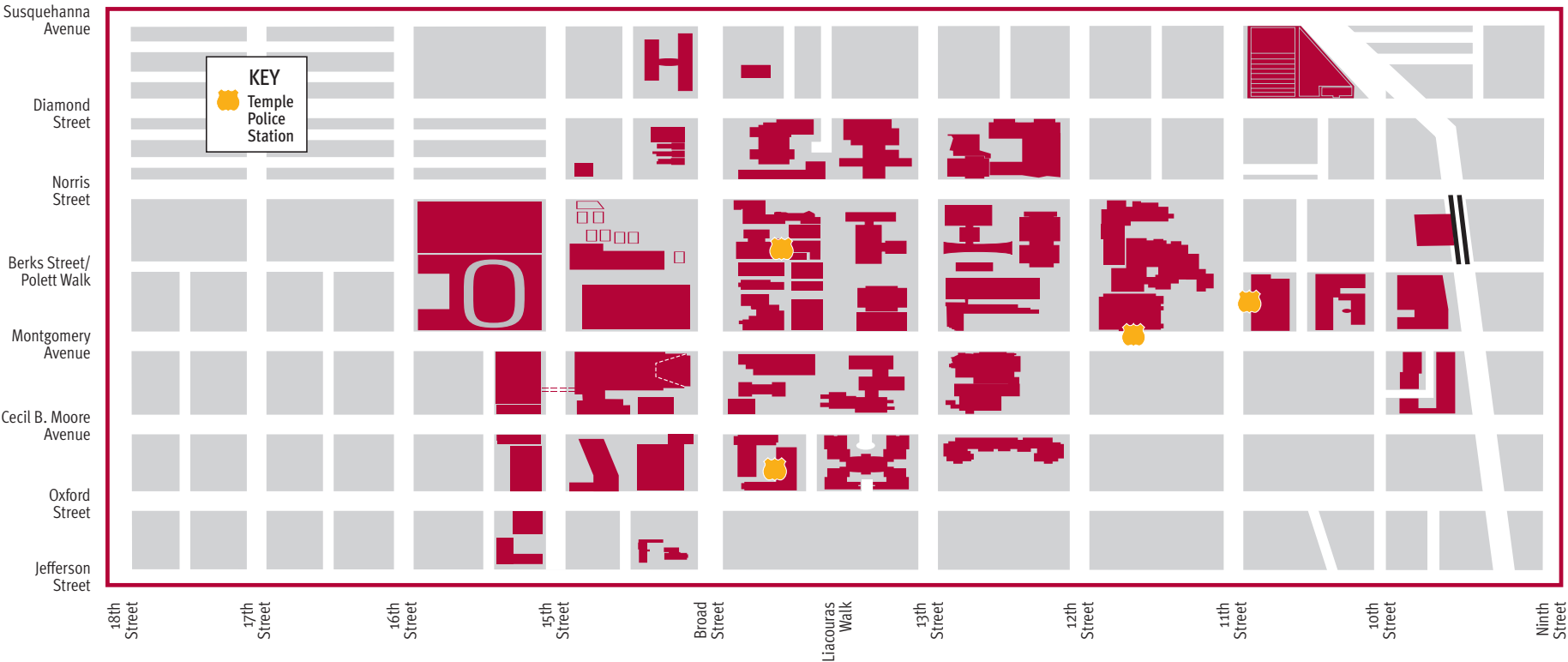
North: Susquehanna Avenue

South: Jefferson Street

West: 18th Street

East: Ninth Street

IMPORTANT NUMBERS	
For immediate help or to report a crime in progress	Call 911 .
If you live within the patrol boundaries surrounding Temple’s Main Campus (see below) and want to report an incident to Temple Police	Call 215-204-1234 .
To leave confidential information via the Temple Police tip line	Call 215-204-6493 .
If you have general questions, comments or concerns for Temple Police—Monday–Friday	Call 215-204-7900 .



SENIOR CITIZEN SUPPORT

Temple offers mentorship programs to decrease isolation among local senior citizens and provides support for caregivers and older adults raising grandchildren or extended family members.

SENIOR SUPPORT PROGRAMS

The Intergenerational Center	Created in 1979, the Intergenerational Center strengthens communities by bringing generations together to address critical concerns and creating opportunities for lifelong civic engagement. Call 215-204-0266 or e-mail patience@temple.edu .
Grandma's Kids	Grandma's Kids offers after-school support to grandparents who are raising their grandchildren. The program addresses the needs of the family by offering academic, social and emotional support. Call 215-204-3554 or email patience@temple.edu .
Family Friends	This program connects older adult volunteers who have experience and time to share with families who may be feeling overwhelmed and isolated. Volunteers are carefully screened and trained and help families access community resources, assist children in developing their learning skills and offer in-home support so that parents and grandparents can take a break. Call 215-204-3199 or email alysia.williams@temple.edu .



FIND US ON *Social*

For the latest news from Temple University, check out Temple's official social media channels.



@templeuniv

@TUGovtAffairs

@TUCommunityRel

@AdmissionsTU

@TempleHealthMed



@TempleUniv



@ Temple University
Office of Community
Relations





Temple community scholarships.

“As someone who went to college only because a scholarship was available to me, I know this is a tremendous opportunity.”

—Neil D. Theobald, president, Temple University

Each year, Temple University awards up to 25 scholarships to ambitious, college-bound students from ZIP codes 19121, 19122, 19132 and 19133 in North Philadelphia.

For more information about Temple’s 20/20 scholarships, visit temple.edu/community.

